

DMSS

Non-Contact Magnetostrictive Position Sensor

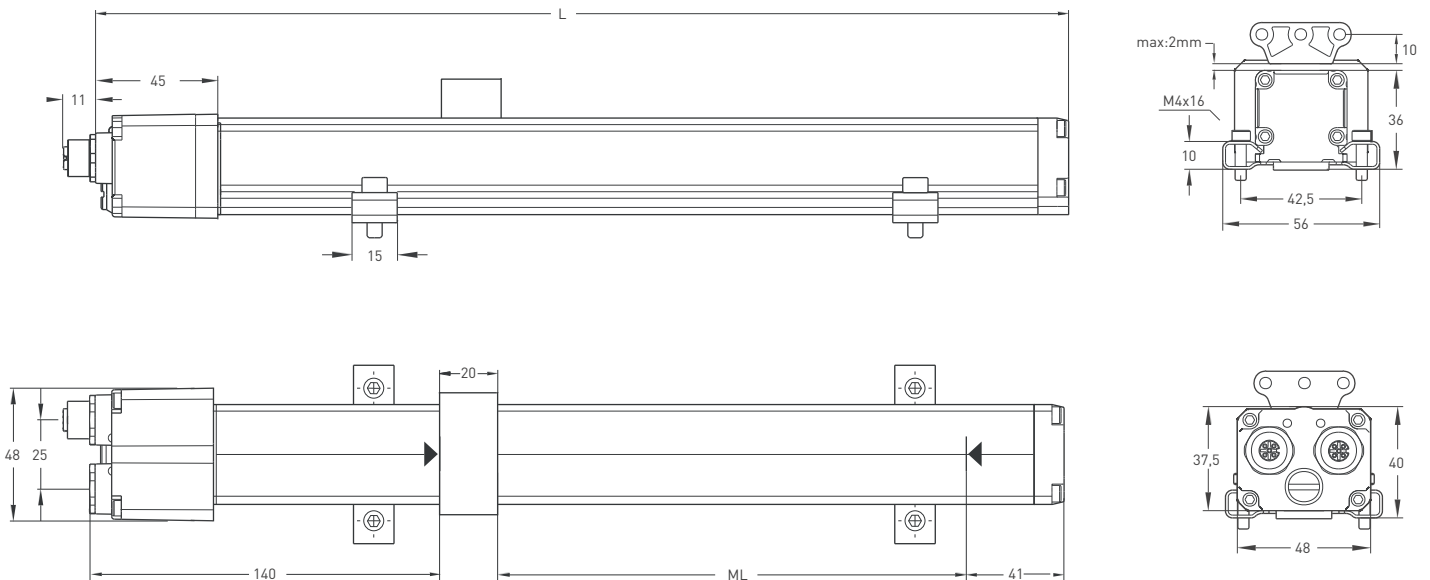
CANbus



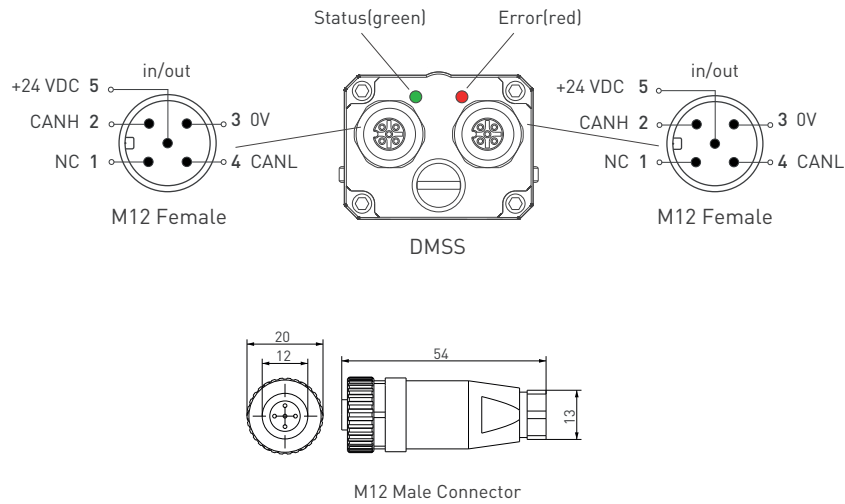
- Measuring length 100 - 5000 mm
- CANbus protocol
- 24 VDC power supply

| Technical Specifications | |
|----------------------------------|---|
| Measurement stroke | 100 - 5000 mm |
| Resolution | 25µm (100mm-400mm), 50µm (450mm-3000mm), 100µm (4000mm-5000mm) |
| Repeatability | 100 µm |
| Output | CANbus |
| Power supply | 24 VDC ±10% |
| Displacement speed | max. < 5 m/s |
| Max. consumption | <100 mA (depending on stroke length) |
| Linearity | 100 mm < %1, 100-300 mm < %0.2, 300-500 mm < %0.1, 500-5000 mm > %0.05 |
| Reverse polarity protection | Up to -30 VDC |
| Overvoltage protection | Up to +30 VDC |
| Update time | 10 ms (at 500 Kbit/s) |
| Interface | CAN |
| Protocol | CANbus |
| Data-length | 16 bit |
| Communication profile | CiA 301 |
| Diagnostic LEDs | Green led: Power on, CAN communication active Red led : Error, stop mode |
| Protection level | IP 65 |
| Operating temperature | -20°C ... +80°C |
| Storage temperature | -30°C ... +90°C |
| Sensor address (Default Node ID) | 20 (programmable by software) |
| Baud rate (Default 500Kbit/s) | max.:1 Mbit/s (programmable by software) |

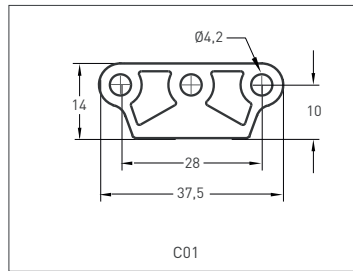
Mechanical Specifications



| DMSS (mm) | 100 | 150 | 200 | 250 | 300 | 350 | 400 | 450 | 500 | 550 | 600 | 650 | 700 | 750 | 800 | 850 | 900 | 1000 | 1100 | 1200 | 1300 | 1400 | 1500 | 1750 | 2000 | 2250 | 2500 | 3000 | 4000 | 5000 | | | |
|-----------------------|--------|-----|-----|-----|-----|-----|-----|-----|-----|-----|-----|-----|-----|-----|------|------|------|------|------|------|------|------|------|------|------|------|------|------|------|------|--|--|--|
| ML (Measuring Length) | 100 | 150 | 200 | 250 | 300 | 350 | 400 | 450 | 500 | 550 | 600 | 650 | 700 | 750 | 800 | 850 | 900 | 1000 | 1100 | 1200 | 1300 | 1400 | 1500 | 1750 | 2000 | 2250 | 2500 | 3000 | 4000 | 5000 | | | |
| [Total Length] | 301 | 351 | 401 | 451 | 501 | 551 | 601 | 651 | 701 | 751 | 801 | 851 | 901 | 951 | 1001 | 1051 | 1101 | 1201 | 1301 | 1401 | 1501 | 1601 | 1701 | 1951 | 2276 | 2526 | 2776 | 3296 | 4316 | 5316 | | | |
| Dead Zone Calculation | 140/41 | | | | | | | | | | | | | | | | | | | | | | | | | | | | | | | | |



Cursor



Ordering Procedure

| Model | Measurement stroke | Protocol | Baud rate | Node ID | Termination | Cursor | Connecting brackets | Dead zone |
|-------|--------------------|------------|---|---------|---------------------|-------------------------------------|---------------------|---|
| DMSS | 150 | CAB | 6BR | 20 | 1S0 | C01T | BR02 | 140/41 |
| DMSS | 100 - 5000 mm | CAB:CANbus | 0BR:10 kbit/s 1BR:20 kbit/s 2BR:50 kbit/s 3BR:100 kbit/s 4BR:125 kbit/s 5BR:250 kbit/s 6BR:500 kbit/s 7BR:800 kbit/s 8BR:1 Mbit | 1 - 127 | 1S0: Off 1S1: On | 1C01T: 1 cursor 2C01T: 2 cursors | BR01 BR02 | ≤ 2000 mm 140/41 > 2000-3000 mm 215/41 > 3000-4000 mm 235/41 > 4000-5000 mm 255/41 |

* T-coded sensors are used with T-coded cursors.