

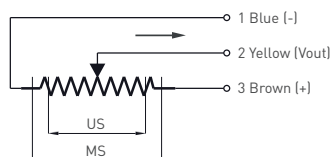
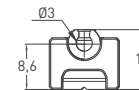
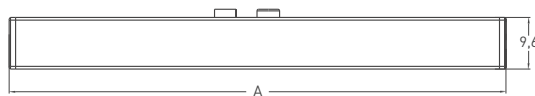
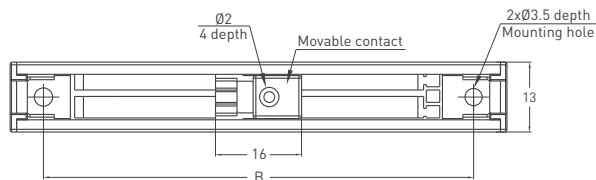
- Measurement range 25 - 150 mm
- 30 million movements life
- Special guidance system
- Infinite resolution
- 2 kOhm : 25 - 50 mm
- 5 kOhm : 75 - 150 mm



Technical Specifications

| | |
|-----------------------------|---|
| Measurement stroke | 25 - 150 mm |
| Linearity | ±%0.1(130-150 mm), ±%0.2 (100-125 mm), ±%0.5 (≤75 mm) |
| Repeatability | < 0.01 mm |
| Resolution | Infinite |
| Resistance | 2 kOhm : 25 - 50 mm 5 kOhm : 75 - 150 mm |
| Resistance tolerance | ± %20 |
| Load resistance | 100 kOhm min. |
| Recommended wiper current | <1 µA |
| Permissible applied voltage | 28 VDC max. |
| Displacement speed | < 5 m/s |
| Mechanical life | 30 million movement |
| Case diameter | 13 mm x 9,6 mm |
| Case material | Anodized aluminium |
| Protection level | IP00 |
| Operating temperature | -20°C ... +80°C |
| Storage temperature | -30°C ... +90°C |

Mechanical Specifications



| SOPH (mm) | 25 | 50 | 75 | 100 | 150 |
|-----------|------|------|-------|-------|-------|
| A ± 0,5 | 67,5 | 92,5 | 117,5 | 142,5 | 192,5 |
| B ± 0,5 | 55 | 80 | 105 | 130 | 180 |

Ordering Procedure

| Model | Measurement stroke (mm) | Linearity (%) | Resistance (kOhm) |
|-------|-------------------------|---|---|
| SOPH | 75 | B | 2K |
| SOPH | 25 - 150 mm | A: ±%0.5 (≤75 mm), B: ±%0.2 (100 - 125 mm), C: ±%0.1 (130 - 150 mm) | 2 kOhm : 25 - 50 mm 5 kOhm : 75 - 150 mm |