
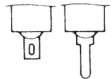

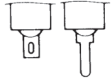






# EIGHT SWITCH SERIES

## 8 Switch Series Selection Table

Part No.	Name	Actuator shape	Number of poles	Switching function	Terminal style	Page
<b>8H</b>	Lever · Rocker		1 · 2	ON — ON ON — OFF — ON (ON) — OFF — (ON) ON — (ON)	 S/D P/C	<b>338</b>
<b>8HD</b>	Lever · Rocker (Dust Proof)		1 · 2		 S/D P/C	<b>340</b>
<b>8M</b>	Small Lever Rocker		1 · 2 · 3 · 4		 S/D	<b>342</b>
<b>8V—M</b>	Small Lever · Rocker PC		1 · 2		 P/C	<b>344</b>

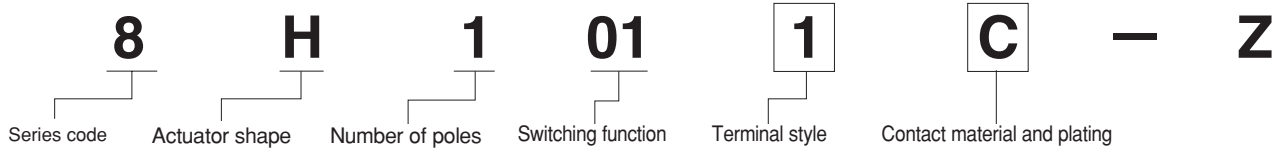
●S/D : Show Solder terminal.  
 ●P/C : Show PC terminal.

Note: For overseas standards, see page 575.

8 Switch Series Common Specifications

Contact specs.		Silver	Gold plated
Rating	Max.	125VAC 6A 250VAC 3A 30VAC 4A	20VDC 25mA
Initial contact resistance		10mΩ Max. (2~4VDC 1A)	20mΩ Max. (200 μVAC 1.5mA)
Initial dielectric strength		AC1500V 1 Minute	
Initial insulation resistance		1000MΩ Min.	(500VDC)
Electrical life	Alternate type	50,000 cycles	
	Momentary type	25,000 cycles	
Operating temperature range		-30~+85°C	
Storage temperature range		-40~+85°C	

Part Numbering



Code	Type
<b>H</b>	Lever•Rocker
<b>HD</b>	Lever•Rocker
<b>M</b>	Small Lever•Rocker
<b>V-M</b>	Small Lever•Rocker

Fig.	Number of poles
<b>1</b>	1 pole
<b>2</b>	2 poles
<b>3</b>	3 poles
<b>4</b>	4 poles

Fig.	Switching function
<b>01</b>	ON - ON
<b>02</b>	ON - OFF - ON
<b>04</b>	(ON)-OFF-(ON)
<b>06</b>	ON - (ON)

Fig.	Terminal style
<b>1</b>	Solder Terminal
<b>2</b>	PC Straight

Code	Contact material	Plating
None	Bs+Ag or Cu+Ag	Ag
<b>C</b>	Bs+Ag or Cu+Ag	Ni+Au

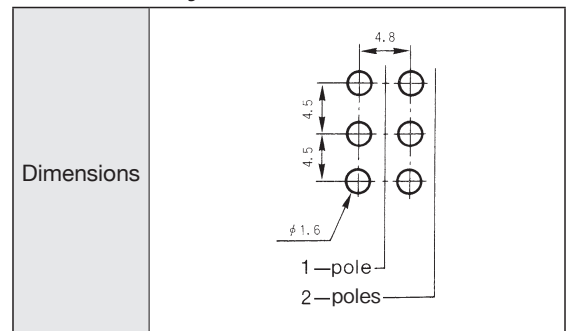
Bs=Brass.  
 Cu=Copper.  
 Ag=Silver.  
 Ni=Nickel.  
 Au=Gold

Note : For some products, the part numbers according to the above-stated combinations are not registered yet. Check the Table of Part Numbers for availability.

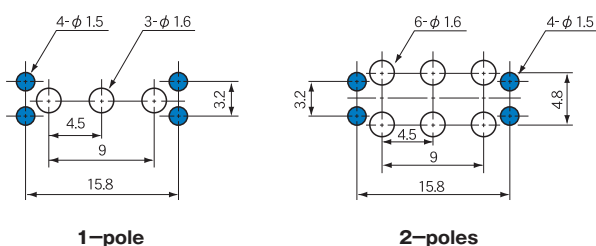
Terminal Styles

Terminal style	Solder Terminal (Style : 1)	PC Straight (Style : 2)
Dimensions		

PC Hole Layouts



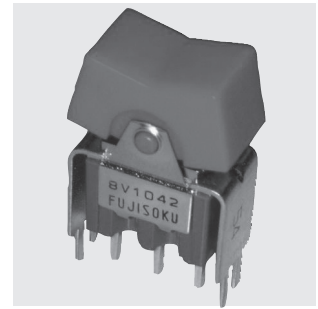
8V-M/PC Hole Layouts



(ON) : Momentary.

# 8V-M

## Small Lever & Rocker Switches for PC Board



UL CSA

RoHS Compliant

### ■ Features

The **8V-M** Small Lever & Rocker Switches for PC Board are designed for use with printed circuit boards. It is easy to directly mount the switch on the PC board and the switch is provided with supporting bracket for stabilized switch mounting. Levers and rockers are available in four matted colors that give an elegant atmosphere. Choose the suitable one for the panel design.

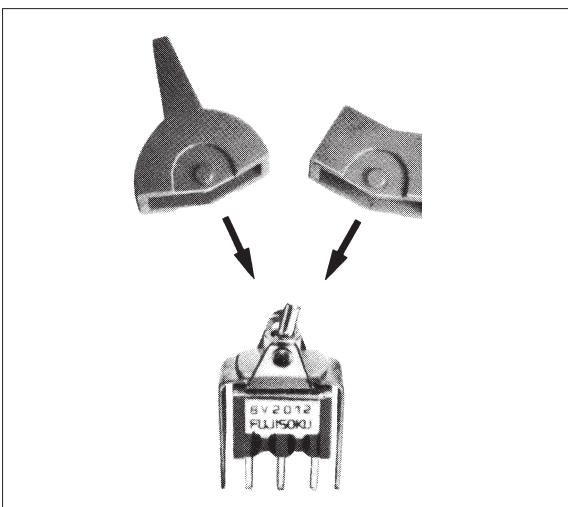
### ■ Standard Accessories

〈Supplied separately〉

Part Name	Lever	Rocker
Dimensions		
White	<b>14000050427</b>	<b>140000480509</b>
Red	<b>14000050428</b>	<b>140000480510</b>
Black	<b>14000050429</b>	<b>140000480511</b>
Gray	<b>14000050450</b>	<b>140000480522</b>

● Specify either one of Lever or Rocker in part number when placing an order.

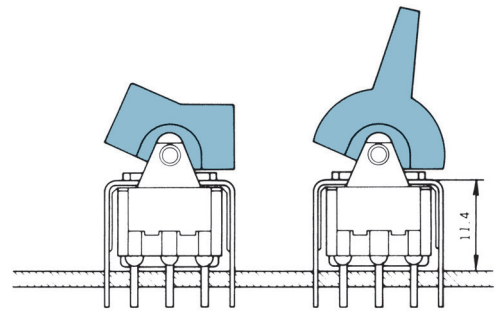
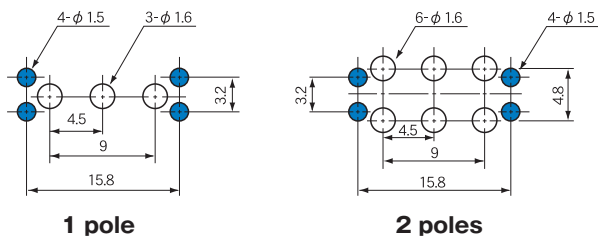
### ■ Lever or Rocker Installation Procedure



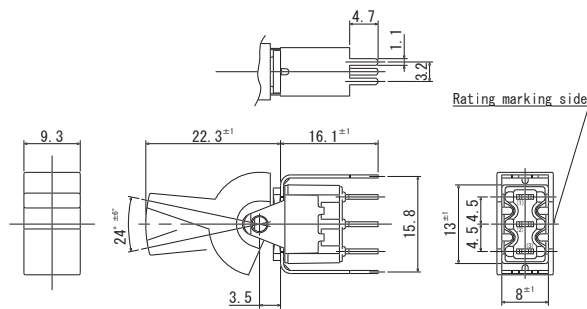
● Insert the lever or the rocker provided onto the switch from the above.

■ PC Hole Layouts

■ PC Board Mounting



SPDT

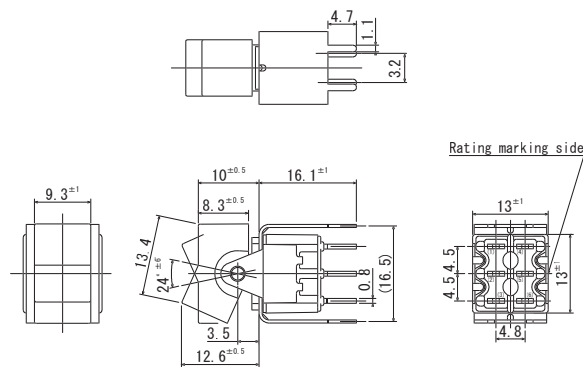
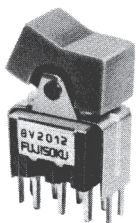


Switching function	Viewed from rating marking side		
Part No.			
8V1012-M-Z	ON	—	ON
★8V1062-M-Z	ON	—	(ON)
Connecting terminals	2-3	—	2-1

Mount with **Lever**

Terminal numbers are not shown on the bottom of the switch.

DPDT



Switching function	Viewed from rating marking side		
Part No.			
8V2012-M-Z	ON	—	ON
★8V2062-M-Z	ON	—	(ON)
Connecting terminals	2-3 5-6	—	2-1 5-4

Mount with **Rocker**

Terminal numbers are not shown on the bottom of the switch.

Some products in the Table of UL and CSA-Approved Products are not registered yet. Before placing the order, check with our Sales Department.

# UL、CSA認定品一覧表 (Lever・Rocker Type Only)

## UL and CSA listed

### ■エイトスイッチシリーズ/8Switch Series

Poles	Switching function			UL (File No.E43275)				CSA (File No.LR38341)				
				8H	8HD	8M	8V-M	8H	8HD	8M	8V-M	
1-pole	101□	ON	—	ON	○	○	○	○	○	○	○	○
	102□	ON	—	OFF —	ON	○				○		
	104□	(ON)	—	OFF —	(ON)	○	○			○	○	
	106□	ON	—	(ON)		○			○	○		○
2-poles	201□	ON	—	ON	○	○	○	○	○	○	○	○
	202□	ON	—	OFF —	ON	○	○			○	○	
	204□	(ON)	—	OFF —	(ON)	○				○		
	206□	ON	—	(ON)		○			○	○		○
3-poles	301□	ON	—	ON			○				○	
4-poles	401□	ON	—	ON			○				○	

- (1) □ shows the terminal type of ① : Solder terminal; ② : PC terminal.
- (2) Some products in the Table of UL and CSA Listed are not registered yet. Before placing the order, check with our Sales Department.
- (3) For the registered products, refer to Table of Part Numbers of respective Series products.
- (4) When the UL and CSA approved products are required, specify "UL /CSA approved Product" when placing the order. The products will be delivered with the UL or CSA marking.

### ■Handling Precautions(EIGHT switch series)

#### 1. Soldering Specifications

- (1) Soldering Specifications  
Device : Soldering iron  
① 420°C, Max.; 3 sec., Max.
- (2) Auto Soldering  
② 275°C ± 10°C, Max.; 5 seconds, Max.  
Note that the above-stated soldering conditions should be applied to the PC terminal type only.

#### 3. Mounting

- Do not bend the terminals before mounting the switch on the PC board.
- After mounting the switch, do not place the device in such a way that the device weight will be applied on the knob of the switch.
- To fix the PC terminal type, solder it on the PC board after fixing the switch body on the panel with the screw.

#### 2. Flux Cleaning

- (1) For the solvent, use the fluorine- or alcohol-based solvent.  
Solvent: Fluorine or Alcohol type
- (2) Since the 8 Switch Series switches are not waterproof-structured, if the PC board is to be cleaned, clean the soldering surface of substrate with a brush so that the switch is not exposed to the cleaning solution.