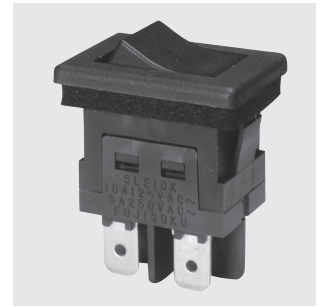


# SLE10K

Panel Seal



## Miniature Power Rocker Switches

UL CSA VDE

RoHS Compliant

### ■ Features

#### 1. Waterproof structure

The switches can be used in a place in wetting risk due to the internally sealed structure.  
The panel sealing performance is equivalent to the IP64 rating.

#### 2. Snap-in panel mounting

The switch can be fixed on the panel just by inserting it to the panel cutout from the front side.

#### 3. Soldering and tab terminals

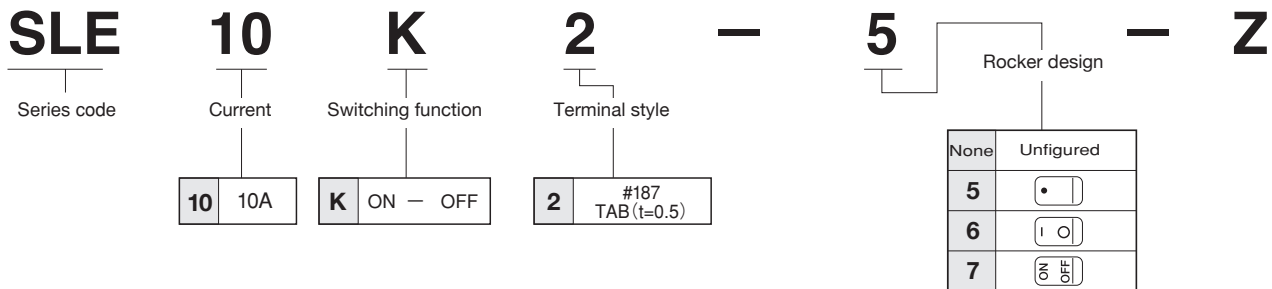
The switch is structured so that the use of the TAB receptacle (#187) or soldering of lead wires can be chosen.

#### 4. UL, CSA and VDE approved products.

### ■ Specifications

Rating	Load	Inductive load		Resistive load
	Inrush current (p.f.=0.6)	125VAC	250VAC	
	Break current (p.f.=0.9)	60A	36A	10A 125VAC 6A 250VAC (p.f.=1.0)
	Min. rating	10A	6A	
Initial contact resistance		20mΩ max.		(1A 2~4VDC)
Dielectric strength		1,500VAC 1 minute		
Insulation resistance		100MΩ min. (500VDC)		
Electrical life(cycles)		10,000 cycles		20,000 cycles
Operating force		3.92~12.7N		
Operating temperature range		-25~+85°C		
Storage temperature range		-40~+85°C		

### ■ Part Numbering



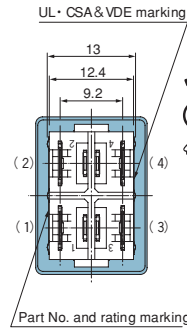
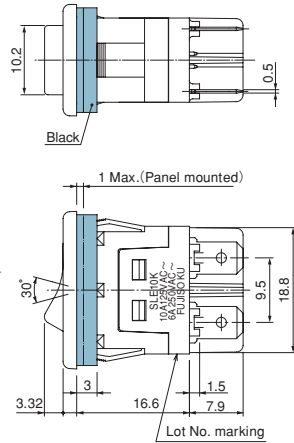
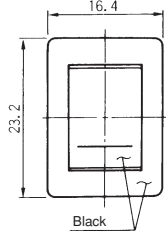
### ■ Table of Part Numbers

Poles	Frame color and rocker color	Switching function	Terminal style	Part No. and rating marking side			
2-pole	Black	ON-OFF	タブ端子/TAB	☆SLE10K2-Z	SLE10K2-5-Z	SLE10K2-6-Z	SLE10K2-7-Z

●For made-to-order products, we accept orders for indication of letters, codes, etc., on the top surface of the rocker.

# SLE10K

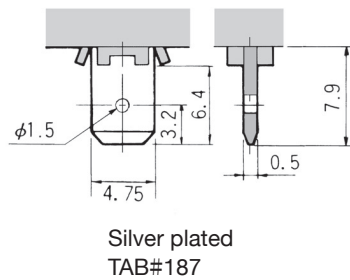
## SLE10K2-Z DPST TAB#187 Terminal



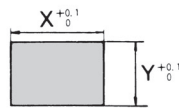
Switching function	Viewed from part No. & rating marking side	
Part No.		
SLE10K2-Z	ON	OFF
SLE10K2-5-Z		
SLE10K2-6-Z		
SLE10K2-7-Z		
Connecting terminals	1-2 3-4	-

Terminal numbers are shown on the bottom of the switch.

### Terminal Style

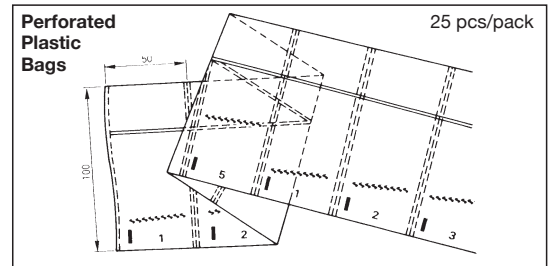


### Panel Cut-Out Dimensions



Panel thickness	X	Y
0.75~1.25	19.2	12.9
1.25~3.5	19.4	12.9

### Packaging Specification



### Handling Precautions

The waterproofing performance of **SLE10K** is equivalent to the IP64 rating, but the following precautions must be strictly observed:

#### 1. Waterproof performance (Equivalent to IP64 rating)

- (1) Although the switch is waterproof-structured, do not use it under the environment where it is always exposed to water pressure (jet flow and under water).
- (2) Avoid the use in places where dust accumulates. The waterproof performance and operability may be deteriorated.

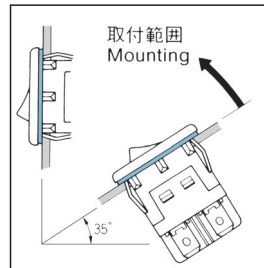


Fig.1.

#### 2. Panel mounting

- (1) When the switch is used in a place where it may be exposed to water splash, mount the switch at a tilt of at least 35 degrees from the horizontal surface. (See Fig. 1.)
- (2) Mount the switch on the panel so that the thickness of packing is 1 mm or below. (See Fig. 2.)

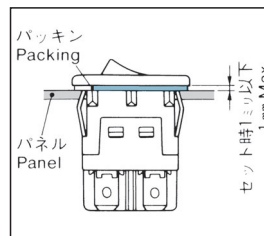


Fig.2.

Do not reuse the switch that is once mounted on a panel. Neglecting this caution may deteriorate the waterproofing performance.

#### 3. Soldering Specifications

##### (1) Manual Soldering

Device: Soldering iron  
380°C, Max.; 3 seconds, Max.