

# Data Sheet for Precision Potentiometer

Singleturn Wirewound Potentiometer

Series MUP



The MUP potentiometers in 22 mm housing are suitable for applications where a compact sensor with good quality at a reasonable price is important.

- Economical and universal potentiometer
- Compact with only 8.6 mm housing depth
- With mechanical end stop (320° / 270°)
- Potentiometer with many options

Models with electrical rotation angles of 320° (MUP1300/1350) and 270° (MUP1307) are available.

Electrical Data	MUP1300	MUP1350	MUP1307
Effective electrical angle of rotation 1.)	320° ±5°		270° ±5°
Total resistance 1.)	0.1 kOhm up to 10 kOhm		
Resistance tolerance	±10%	±5%	±10%
Independent linearity (best straight line) 1.)	±1%	±0,5%	±1%
Theoretical resolution	Depends on resistance value		
Rotational noise (ENR) 1.) (Method C)	100 Ohm		
Max. / recommended wiper current 1.)	34 mA / 1 µA		
Power rating @ 70°C (0W @ 105°C)	1.5 W		
Insulation Resistance 1.)	1000 MOhm @ 500 VDC		

Mechanical Data, Environmental Conditions, Miscellaneous	MUP1300	MUP1350	MUP1307
Mechanical angle of rotation	320° +10° with stop		270° +10° with stop
Lifetime (90% el. eff. angle half sine) 2.)	400.000 rotations		
Max. operational speed	10 rev. / min.		
Bearing	Sleeve bearing		
Operational torque @ ambient temperature 1.) 2.)	3 Nmm		
End stop torque 1.) 2.)	60 Ncm		
Operating temperature range	-30 °C up to +105 °C		
Storage temperature range	-30 °C up to +105 °C		
Protection grade (IEC 60529)	IP40		
Protection option D shaft sealing (IEC 60529)	IP65 optional		
Housing diameter	22 mm		
Housing depth	8.6 mm		
Shaft diameter	6 mm		
Shaft type	Solid shaft		

# Data Sheet for Precision Potentiometer

Singleturn Wirewound Potentiometer

Series MUP

Mechanical Data, Environmental Conditions, Miscellaneous	MUP1300	MUP1350	MUP1307
Connection type	Gold plated soldering lugs		
Connection position	Radial		
Sensor mounting	Bushing		
Mass	25 g		
Fastening parts included in delivery	Nut, toothed washer		
Fastening torque mounting nut	100 Ncm		
Material shaft	Stainless steel		
Material housing	Reinforced fibreglass PBT		

1.) According IEC 60393

2.) Determined by climatic conditions according to IEC 68-1, para. 5.3.1 without load collectives

Please note: Max. permissible supply voltage <75 VDC respectively <50 VAC in addition the max. power rating must be observed

Number of wire turns / resolution							
Resistance value Ohm	100	200	500	1k	2k	5k	10k
Number of wire turns 320°	363	360	479	666	636	829	1105
Number of wire turns 270°				848		1151	1310

Ø Resolution in degree E.g. R5k = 320° / 829 = 0,386° per winding

**Mounting Note:** Soldering temperature max. 360°C, soldering time max. 5 s, soldering tip diameter max. 3 mm



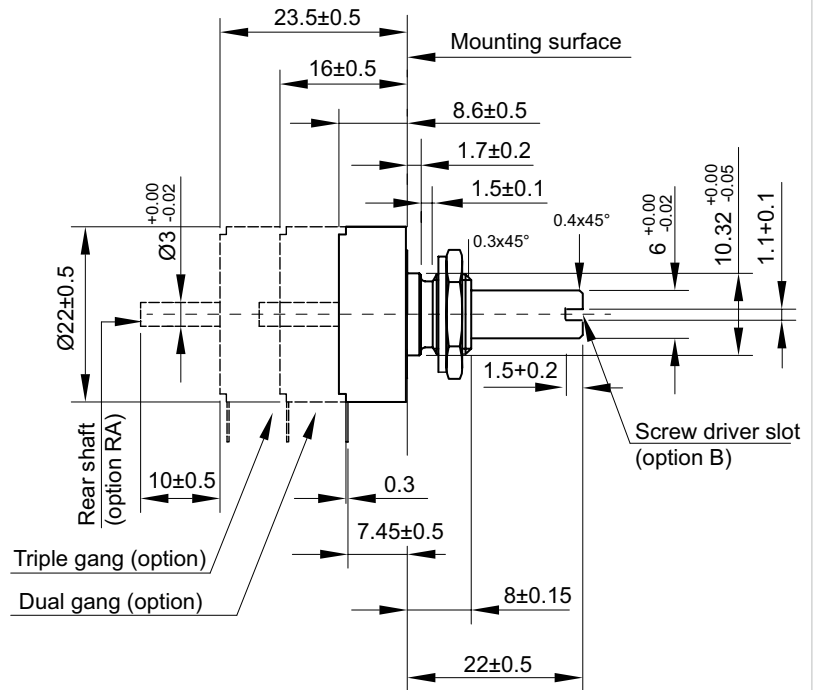
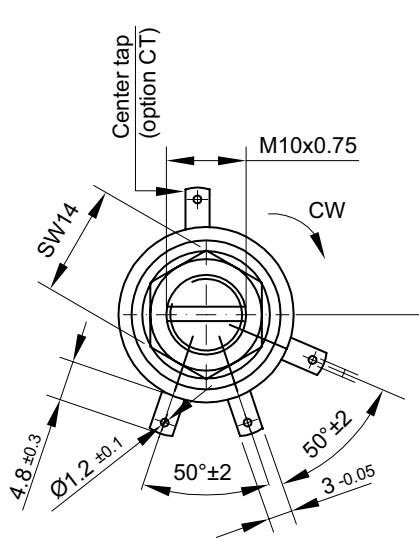
# Data Sheet for Precision Potentiometer



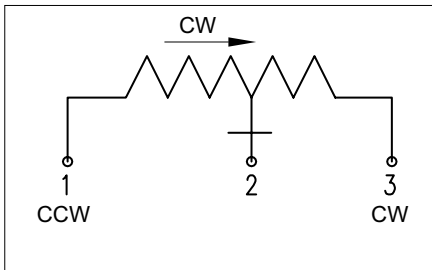
Singleturn Wirewound Potentiometer

Series MUP

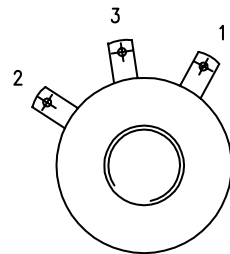
## Drawing



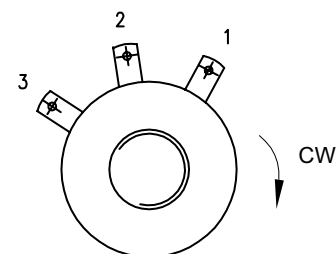
### Connection diagram



Dimension in mm



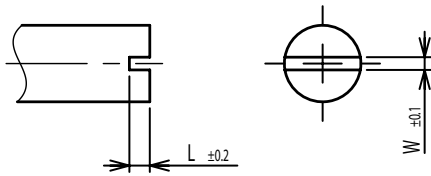
MUP1300/1350  
320°



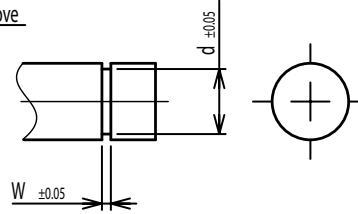
MUP1307  
270°

### On Request: Special machining on shaft

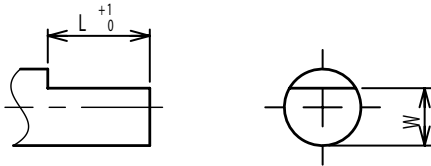
Slot



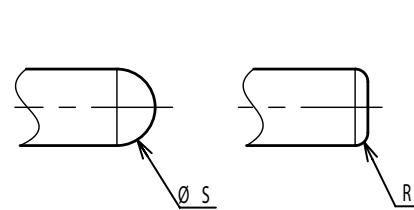
Groove



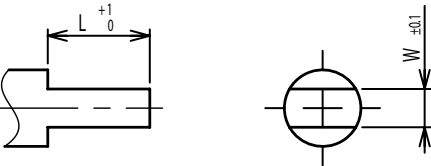
Flat



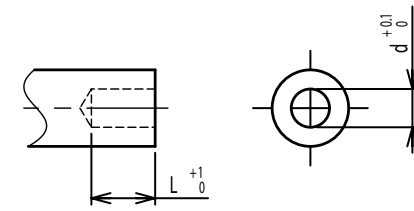
Round top



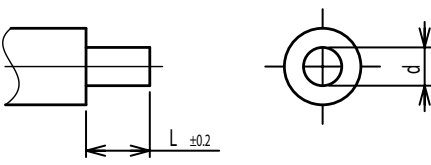
Double side flat



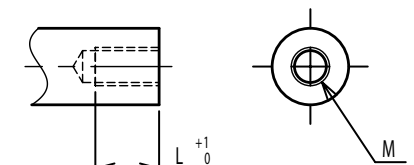
Counterbore hole



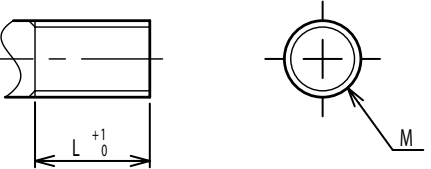
Step



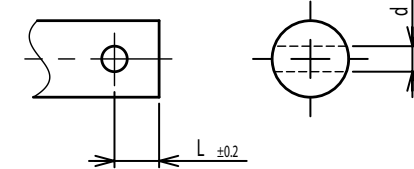
Counterbore screw hole



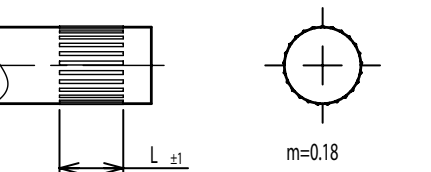
Screw Thread



Pin hole



Knurled(Parallel)



Screw thread inside hole

