

Data Sheet for sensor accessories

Magnet holder push-on type

Series MHA



- Magnet holder made of stainless steel incl. magnet
- Perfect for Hall kit encoders, for example MEGATRON series MxB22AH
- Available for shaft diameters 4 mm, 6 mm, 6,35 mm (1/4"), 8 mm, 12 mm
- For kit encoders with single or redundant electronic

MEGATRON's push-on stainless steel precision magnet holders, including ex works the magnet with a perfect seat, are available for the most common shaft diameters. They provide the required simple and reliable assembly of a magnet on the shaft in the application. The magnet-holder incl. magnet is required to operate a magnetic kit encoder precisely in the application.

Data

Material magnet holder	Stainless Steel
------------------------	-----------------

Order code MHA

Description	Order code	Minimum Order Quantity [pcs.]
Series:	MHA	
Shaft diameter: Ø 4 mm	DM4	10
Ø 6 mm	DM6	1
Ø 6,35 mm (1/4")	DM6,35	10
Ø 8 mm	DM8	10
Ø 12 mm	DM12	10
Version Magnet: Single-Electronic		MAG 6x3
Redundant Electronic		MAG 6x2,5

Order examples push-on magnet holder:

Example 1, requirement:

Shaft Ø 6 mm with single electronic

Example 1, order code:

MHA DM6 MAG 6x3

Example 2, requirement:

Shaft Ø 4 mm with redundant electronic

Example 2, order code :

MHA DM4 MAG 6x2,5

For higher quantities or on-going demand, additional options are available as described below on request

For example:

- Magnet holders for shaft diameters Ø 3 mm, Ø 3.175 mm, Ø5 mm, Ø10 mm
- Custom specific magnet holders
- Special magnets for reducing negative side effects, in the case of radial or axial deviations of the shaft in relation to the sensor housing. For example, if the permissible tolerance fields between shaft and kit encoder cannot be adhered caused by the application.

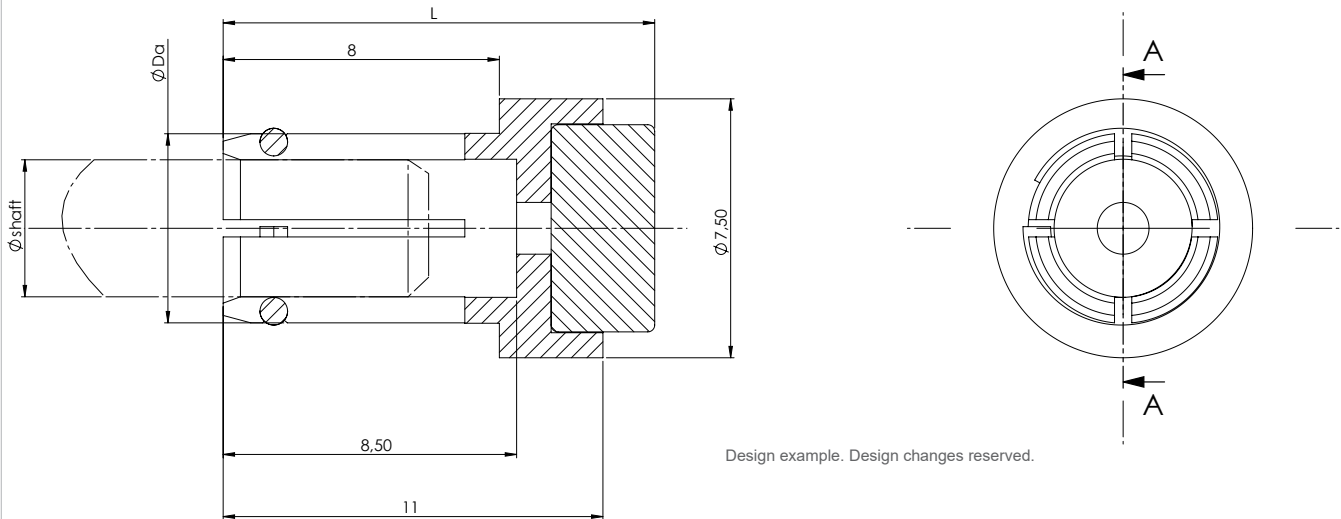
Data Sheet for sensor accessories

Magnet holder push-on type

Series MHA

Drawing

An adhesive, such as 2K-EP, may be suitable for a permanent fixation of the position of the magnet holder on the shaft. For the reliable operation of the kit encoder, please refer regarding the guided installation distances of the magnet in relation to the sensor housing, as described in the data sheet of the kit encoder.



Dimensions			
\varnothing shaft in application [mm] Tolerance band g7 / f7	\varnothing Da [mm] magnet holder	L magnet holder for kit encoder with single electronic [mm]	L magnet holder for kit encoder with redundant electronic [mm]
4	5.5	12	12.5
6	7.5	12	12.5
6.35	7.5	12	12.5
8	9.5	12	12.5
12	13.5	16.5	16

Information are subject to possible design changes. Actual dimensions may vary.