

Data Sheet for Precision Potentiometer

SIN / COS potentiometers (conductive plastic) - non-linear

Series SCX50



Sinus / Cosinus SCX50 potentiometers can be used to implement mathematical functions.

- Very precise sinus cosinus potentiometer
- Power rating up to 1.25 W
- Very high resistance versions
- Very long lifespan
- 2 x ball bearings
- Electrically effective angle of rotation 360°

This high-resolution special potentiometer in 51 mm housing makes it easy to convert movements in x-y coordinate system into adequate electrical quantities. The potentiometers are optimally used in tool manufacturing, in mechanical engineering and in meteorology. Very high precision with a very long lifespan of up to more than 50 million shaft rotations distinguish these sensors.

Electrical Data

Effective electrical angle of rotation 1.)	360° endless
Total resistance 1.)	1..100 kOhm
Resistance tolerance	±15% (±10%)
Independent linearity (best straight line) 1.)	±0.5%, ±0.3% (±0.2%)
Theoretical resolution 1.)	Nearly infinite
Backlash (Hysteresis) 1.)	≤ 0.5°
Max. / recommended wiper current 1.)	10 µA / 2 µA
Power rating @ 70°C (0W @ 105°C)	1.25 W
Insulation Voltage 1.)	1000 VAC, 1min
Insulation Resistance 1.)	1000 MOhm @ 1000 VDC

Mechanical Data, Environmental Conditions, Miscellaneous

Mechanical angle of rotation 1.)	360° without stop
Lifetime (90% el. eff. angle half sine) 2.)	50 Mio. rotations
Max. operational speed	400 rev. / min.
Bearing	2 x ball bearing
Operational torque @ ambient temperature 1.) 2.)	5 Nmm
Operating temperature range	-55 °C up to +125 °C
Storage temperature range	-55 °C up to +125 °C
Protection grade (IEC 60529)	IP40
Vibration (IEC 68-2-6, Test Fc)	15g 10Hz up to 2000Hz x 12h
Shock (IEC 68-2-27, Test Ea)	49g @ 11 ms x 18
Housing diameter	50.8 mm
Housing depth	26 mm
Shaft diameter	6 mm (optional 6.35 mm)
Shaft type	Solid shaft

Data Sheet for Precision Potentiometer

SIN / COS potentiometers (conductive plastic) - non-linear

Series SCX50

Mechanical Data, Environmental Conditions, Miscellaneous

Max. radial load	≤1 N
Max. axial load	≤1 N
Connection type	Gold plated soldering pins
Connection position	Radial
Sensor mounting	Servo flange
Mass	120 g
Fastening parts included in delivery	3 servo clamps SFN1 with screw M3 x 7.5
Material shaft	Stainless steel
Material housing	Metal

1.) According IEC 60393

2.) Determined by climatic conditions according to IEC 68-1, para. 5.3.1 without load collectives

Please note: Max. permissible supply voltage <75 VDC respectively <50 VAC in addition the max. power rating must be observed

Order code

Description	Selection: standard=black/bold, possible options=grey/italic						
Series	SCX50						
Resistance value / Option Tandem:			Tandem*				
1 kOhm	R1k		/1k				
<i>Option 2 kOhm</i>	<i>R2k</i>		/2k				
5 kOhm	R5k		/5k				
10 kOhm	R10k		/10k				
<i>Option 20 kOhm</i>	<i>R20k</i>		/20k				
<i>Option 50 kOhm</i>	<i>R50k</i>		/50k				
<i>Option 100 kOhm</i>	<i>R100k</i>		/100k				
<i>Option rear shaft:</i>							
<i>Standard Ø6,00 x 15 mm</i>							
<i>Shaft length in mm</i>							
<i>Shaft diameter in mm (≤6,00 mm)</i>							
Resistance tolerance:							
±15%							
<i>Option ±10%</i>							
Independent linearity:							
±0,5%							
<i>Option ±0,3%</i>							
<i>Option ±0,2%</i>							
Option front shaft:							
Standard Ø6,00 x 16,5 mm							
<i>Option Ø6,35 mm</i>							
<i>Option shaft length in mm</i>							
<i>Option shaft diameter in mm (≤6,35 mm)</i>							
<i>Option screwdriver slot:</i>							
							B

*Housing length +17 mm

For higher quantities or on-going demand, additional options are available as described below on request

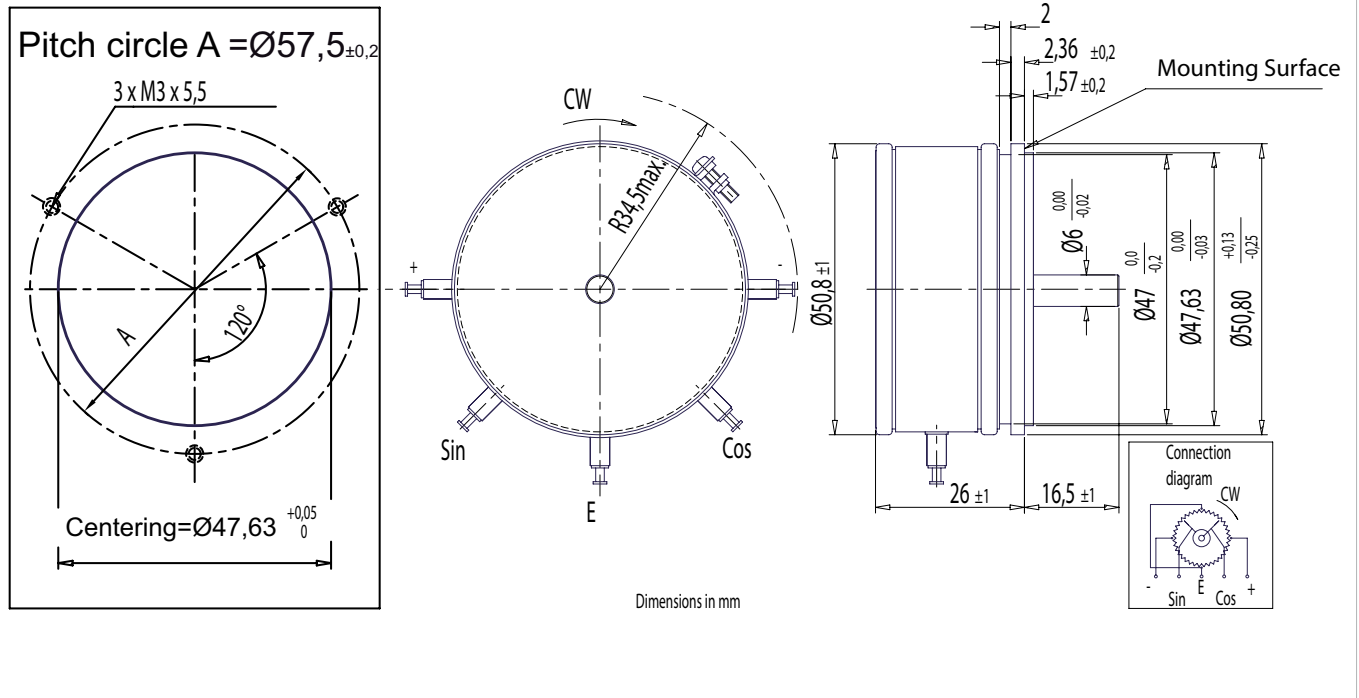
For Example: Multi ganged potentiometers (max. 3) / housing length +17 mm per gang, bushing version, sealed housing case, special electrical and mechanical angles of rotation, and special resistance and linearity tolerances. Furthermore we can mount gear wheels or attach cable assemblies with or without connectors and much more.

Data Sheet for Precision Potentiometer

SIN / COS potentiometers (conductive plastic) - non-linear

Series SCX50

Drawing

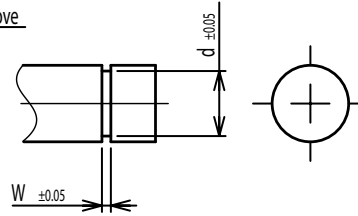


On Request: Special machining on shaft

Slot



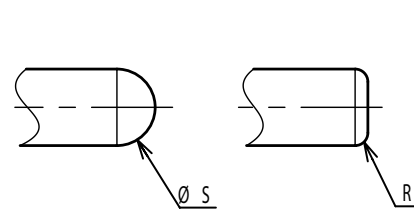
Groove



Flat



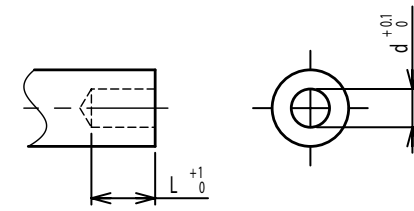
Round top



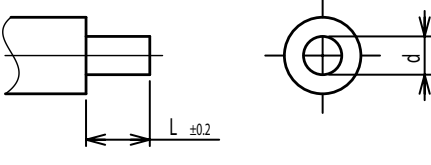
Double side flat



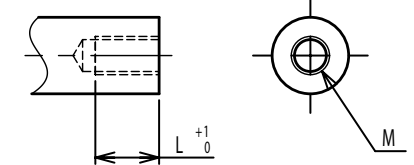
Counterbore hole



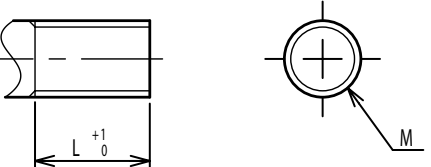
Step



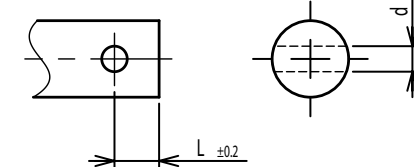
Counterbore screw hole



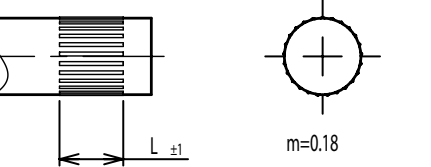
Screw Thread



Pin hole



Knurled(Parallel)



Screw thread inside hole

