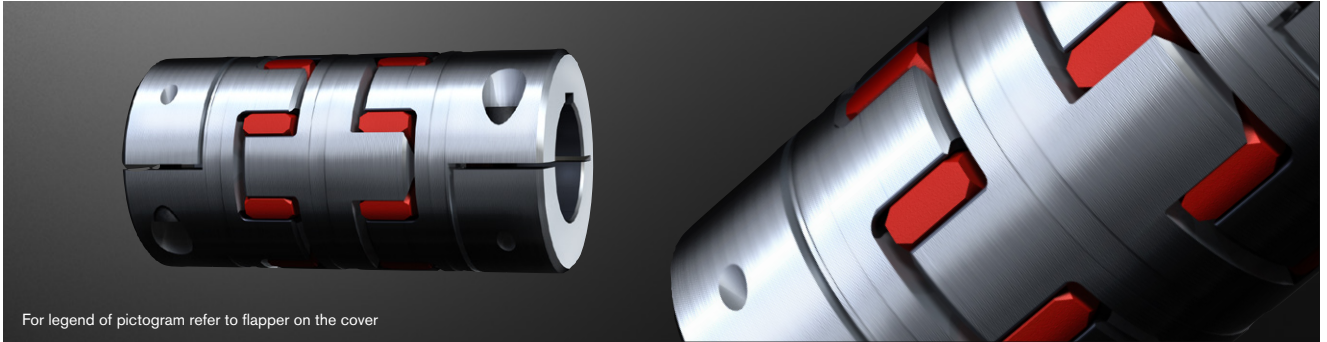


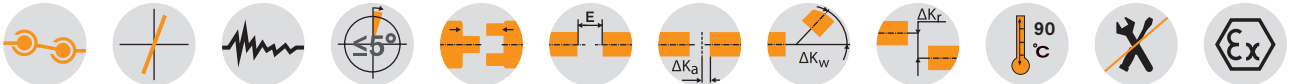
# ROTEX® GS DKM

## Backlash-free jaw couplings

### Double-cardanic jaw coupling



For legend of pictogram refer to flapper on the cover



ROTEX® GS DKM - Spacer material aluminium/hub material depends on hub type

Size	Spider GS <sup>1)</sup> torque T <sub>KN</sub> [Nm]		Dimensions [mm]													
	98 ShA	64 ShD	d <sub>max.</sub> <sup>2)</sup>	D	D <sub>H</sub>	d <sub>H</sub>	d <sub>H1</sub>	l <sub>1</sub> , l <sub>2</sub>	M, N	l <sub>11</sub>	l <sub>12</sub>	LDKM	E	b	s	a
5	0.9	—	5	—	10	—	—	5	—	3	13	23	5	4	0.5	4.0
7	2.0	2.4	7	—	14	—	—	7	—	4	20	34	8	6	1.0	6.0
9	5.0	6.0	11	—	20	7.2	—	10	—	5	25	45	10	8	1.0	1.5
12	9.0	12.0	12	—	25	8.5	—	11	—	6	30	52	12	10	1.0	3.5
14	12.5	16.0	16	—	30	10.5	—	11	—	8	34	56	13	10	1.5	2.0
19	21.0	26.0	24	—	40	18.0	18	25	—	10	42	92	16	12	2.0	3.0
24	60	75	30	—	55	27.0	27	30	—	16	52	112	18	14	2.0	3.0
28	160	200	38	—	65	30.0	30	35	—	18	58	128	20	15	2.5	4.0
38	325	405	45	—	80	38.0	38	45	—	20	68	158	24	18	3.0	4.0
42	450	560	55	85	95	46	46	50	28	22	74	174	26	20	3.0	4.0
48	525	655	62	95	105	51	51	56	32	24	80	192	28	21	3.5	4.0
55	685	825	74	110	120	60	60	65	37	28	88	218	30	22	4.0	4.5

<sup>1)</sup> For selections see page 22 et seqq./other spiders see page 127.

<sup>2)</sup> Dependent on hub type. Hub types can be freely selected, for summary see page 132.

Ordering  
example:

ROTEX® GS 24	DKM	98 ShA-GS	d 25	1.0 - Ø25		2.5 - Ø25	
Coupling size	Type	Spider hardness	Optional: Bore in spider	Hub type	Finish bore	Hub type	Finish bore