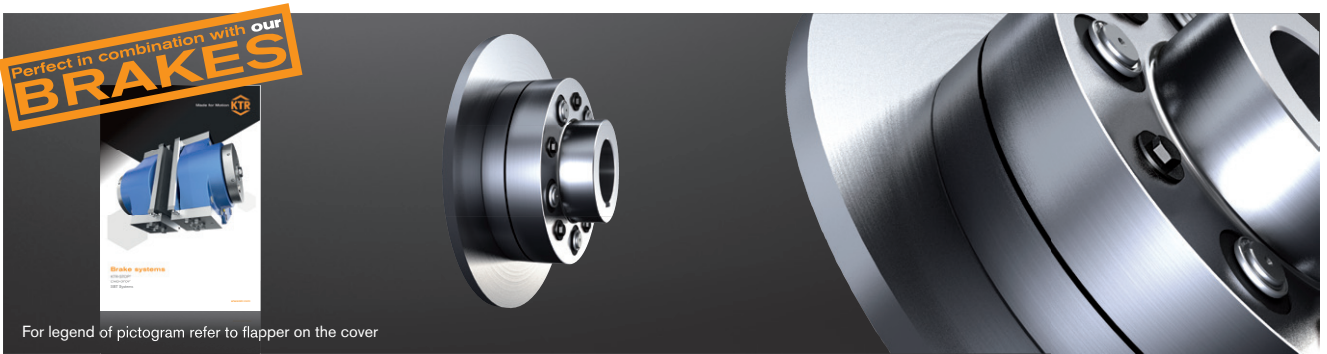


# REVOLEX® KX-D SB

## Flexible pin & bush coupling

With brake disk



For legend of pictogram refer to flapper on the cover



### REVOLEX® KX-D Type SB

Size	Torque <sup>1)</sup> [Nm] KX-D		Finish bore KX-D (min. - max.)		Dimensions [mm]								
	T <sub>KN</sub>	T <sub>K max</sub>	GJL d <sub>1</sub> , d <sub>2</sub>	Steel d <sub>1</sub> , d <sub>2</sub>	L	l <sub>1</sub> , l <sub>2</sub>	E	D <sub>H</sub>	D <sub>1</sub>	N <sub>1</sub>	N <sub>2</sub>	N <sub>3</sub>	M*
105	9400	18800	34-110	0-130	237	117	3	330	180	56	29	55	76
120	15200	30400	50-125	0-150	270	132	6	370	206	76	45	75	100
135	20000	40000	70-140	70-170	300	147	6	419	230	76	45	75	100
150	25000	50000	82-160	82-190	336	165	6	457	256	76	45	75	100
170	41000	82000	95-180	95-220	382	188	6	533	292	92	62	91	130
190	54000	108000	110-205	110-245	428	211	6	597	330	92	62	91	130
215	67500	135000	125-230	125-275	480	237	6	660	368	92	62	91	145
240	98000	196000	140-250	140-310	534	264	6	737	407	122	75	121	167

### Selection of coupling/brake disk dimension N

Size	Brake disk ØA x b <sup>2)</sup>					
	Ø560x30 KX-D	Ø630x30 KX-D	Ø710x30 KX-D	Ø800x30 KX-D	Ø900x30 KX-D	Ø1000x30 KX-D
105	47	47				
120	42	42				
135		57	57			
150			75	75		
170			82	82		
190				105	105	
215				131	131	131
240				128	128	128

\* Drop-out center design dimension required

<sup>1)</sup> Standard material Perbunan [NBR] 80 Shore A, for selection see page 18 et seqq.

<sup>2)</sup> Maximum circumferential speed v = 60 m/s referring to the maximum outside diameter.

Finish bore according to ISO fit H7, feather keyway according to DIN 6885, sheet 1 [JS9].

If requested, coupling is dynamically balanced (semi-key balancing G 6.3 with speed as specified by the customer). For circumferential speeds exceeding v = 30 m/s dynamic balancing is necessary (referring to outside diameter ØA).

Ordering  
example:

REVOLEX® KX 170	SB	Ø710 x 30	1 - Ø120	2SB - Ø150
Type and size of coupling	Type	Brake disk	Finish bore	Finish bore