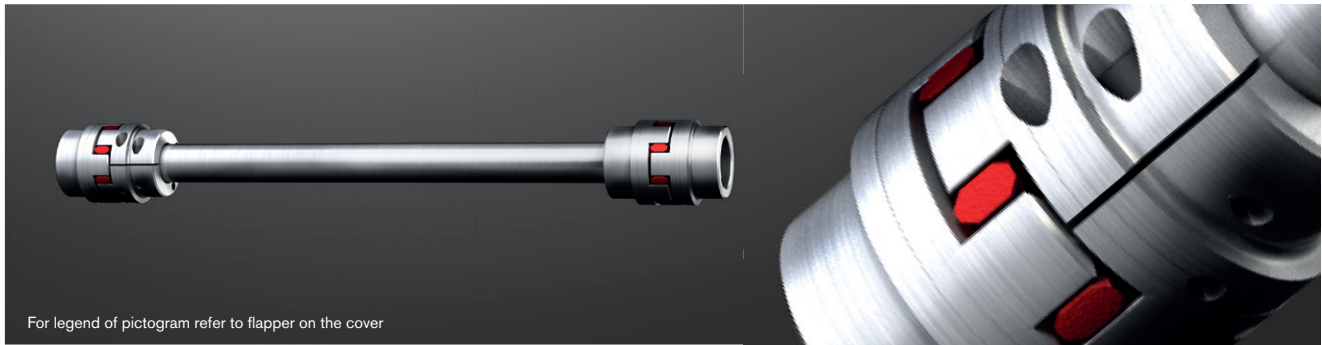


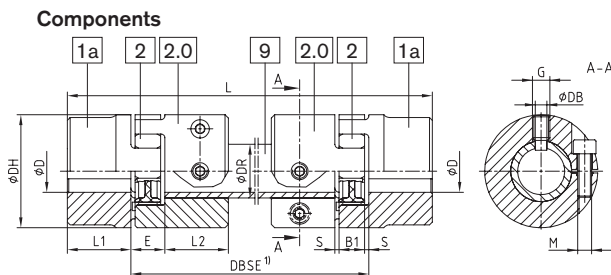
ROTEX® ZR

Flexible jaw couplings

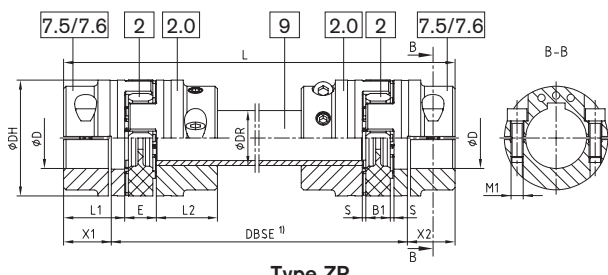
Intermediate shaft programme



For legend of pictogram refer to flapper on the cover



Type ZR
(with GS spider)³⁾



Type ZR
(with GS spider and clamping hubs type DH for a double-cardanic connection 7.5 or 7.6)³⁾

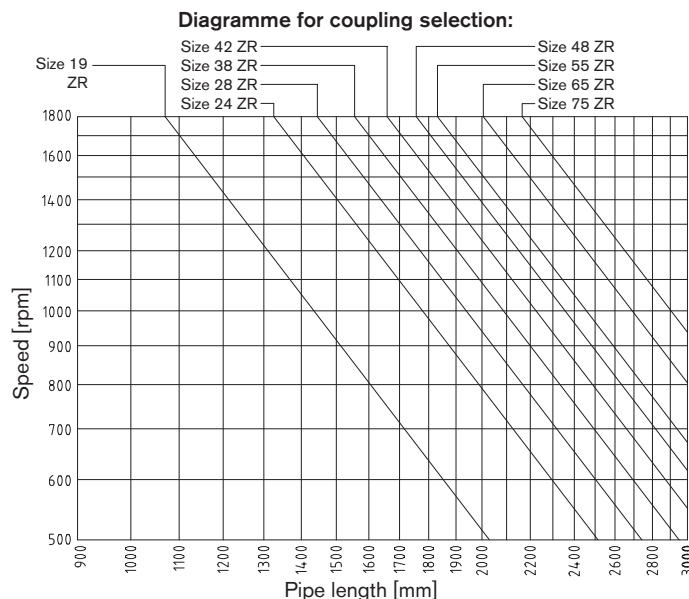
ROTEX® Type ZR																						
Size	Dimensions [mm]																					
	Max. finish bore D		DH	L1, L2	X1, X2	E	B1	S	L		min. DBSE		Clamping screw component 2.0		Clamping screw component 7.5/7.6		Intermediate pipe Torsional stiffness/m		Locking screw G	Pin hole DB [mm]	Axial displacement [mm]	Angular displacement [degree]
	Component 1a	Component 7.5/7.6							Component 1a	Component 7.5/7.6	M	T _A [Nm]	M1	T _A [Nm]	DR	C ²⁾ [Nm ² /rad]						
19	25	20	40	25	17.5	16	12	2.0	L = DBSE + 2 * L1	L = DBSE + 2 * X1/X2	110	97	M6	14	M6	10	Ø20x3	954.9	M6	4.0	1.2	0.9
24	35	28	55	30	22.5	18	14	2.0			128	111	M6	14	M6	14	Ø30x4	4522	M8	5.5	1.4	0.9
28	40	38	65	35	25.5	20	15	2.5			145	129	M8	35	M8	35	Ø35x4	7611	M10	7.0	1.5	0.9
38	48	45	80	45	35.5	24	18	3.0			180	157	M8	25	M8	35	Ø40x4	11870	M12	8.5	1.8	1.0
42	55	55	95	50	39.0	26	20	3.0			198	174	M10	49	M10	69	Ø45x4	17487	M12	8.5	2.0	1.0
48	62	60	105	56	45.0	28	21	3.5			217	190	M12	86	M12	120	Ø50x4	24648	M16	12	2.1	1.1
55	74	70	120	65	50.0	30	22	4.0			242	220	M12	120	M12	120	Ø55x4	33544	M16	12	2.2	1.1
65	80	80	135	75	60.0	35	26	4.5			281	250	M12	120	M12	120	Ø65x5	68329	M16	12	2.6	1.2
75	95	90	160	85	67.5	40	30	4.0			318	285	M16	295	M16	295	Ø75x5	108000	M16	12	3.0	1.2

¹⁾ With inquiries and orders please specify the shaft distance dimension DBSE along with the maximum speed to review the critical bending speed.

²⁾ Torsion spring stiffness with 1 m length of intermediate pipe finish bore acc. to ISO fit H7, feather keyway acc. to DIN 6885 sheet 1 [JS9]. Friction torques of clamping hubs have to be considered. Please order dimension sheet M583613.

³⁾ Mathematically transmittable torque with double-cardanic types acc. to 92 ShA-GS using the higher quality spiders 98 ShA-GS

Not permissible for crane and hoist drives



Ordering example:	ROTEX® 38	ZR	1200	98 ShA-GS	7.5	Ø38	7.5	Ø30
	Coupling size	Type	Shaft distance dimension DBSE	Spider hardness	Hub type	Finish bore	Hub type	Finish bore