

# Mixing valve NiTea®

The NiTea is a mixing valve for professional coffee machines capable of delivering hot water for the preparation of infusions at the desired temperature and with a high degree of accuracy and stability. The system is able to mix the hot water coming from the boiler and the cold water coming from the water network passively, without any power supply, granting the mixed water always at the optimal temperature.

The valve is able to behave in a reactive way thanks to an actuator with shape memory material that varies mixing ratio by compensating any possible fluctuation of the working conditions. The possibility of setting the brewing temperature makes the system able to meet the needs of the most demanding users without increasing the complexity of the traditional hydraulic circuit of the machine.

#### Advantages:

- No power supply
- High accuracy, stability and reliability
- Simplified installation

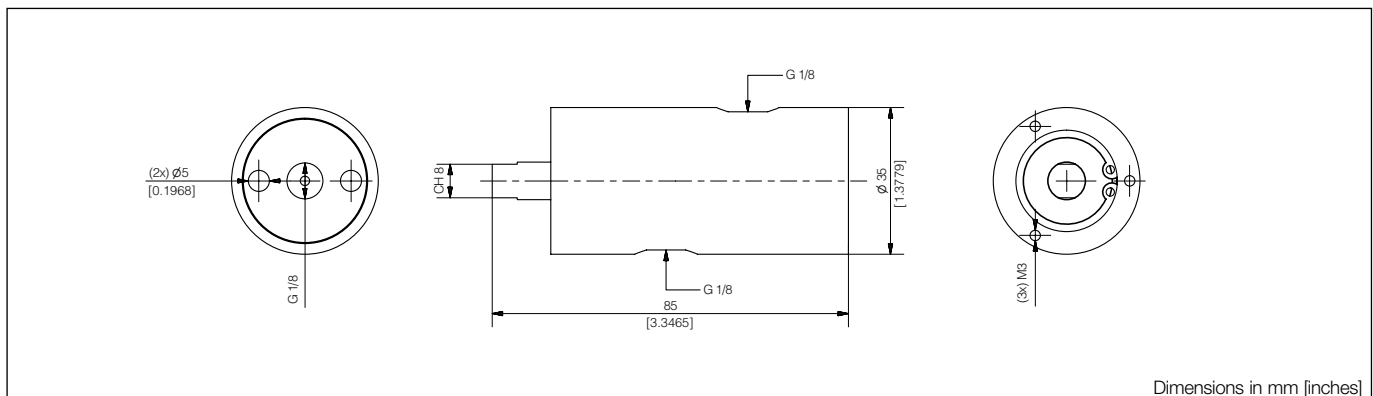


#### MAIN APPLICATIONS

- Coffee machines
- Beverage equipments

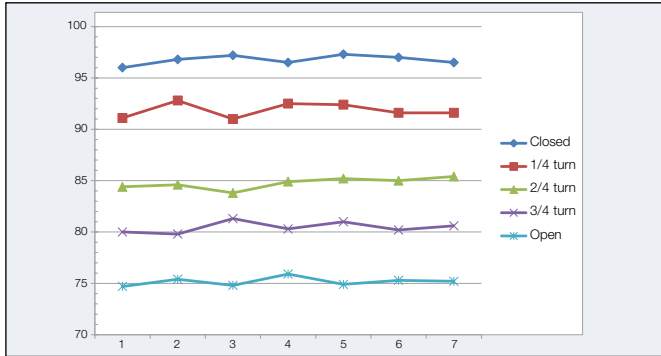
#### TECHNICAL INFORMATION

Hot component temperature	110 - 135 °C / 230 - 275 °F
Cold component temperature	5 - 35 °C / 41 - 95 °F
Range of setting temperature of the mixed water	78 - 98 °C / 172 - 208 °F (boiling)
Range of setting	Continuous
Accuracy	± 2 °C / 3.6 °F
Cold component work pressure	1 - 9 bar / 14.5 - 130.5 psi
Threaded inlet - outlet	G 1/8 inch
Weight	450 g / 0.99 lb
Materials standard compliant	EC 1935/2004 NSF51



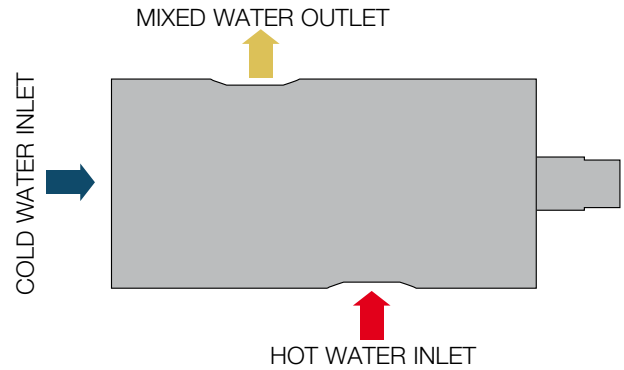
**PERFORMANCE**

Pressure cold component = 6 bar / 87 psi  
 Spilled water = 400 g / 0.88 lb  
 The correspondence between the plug position and temperature is indicative because the setting is continuous.

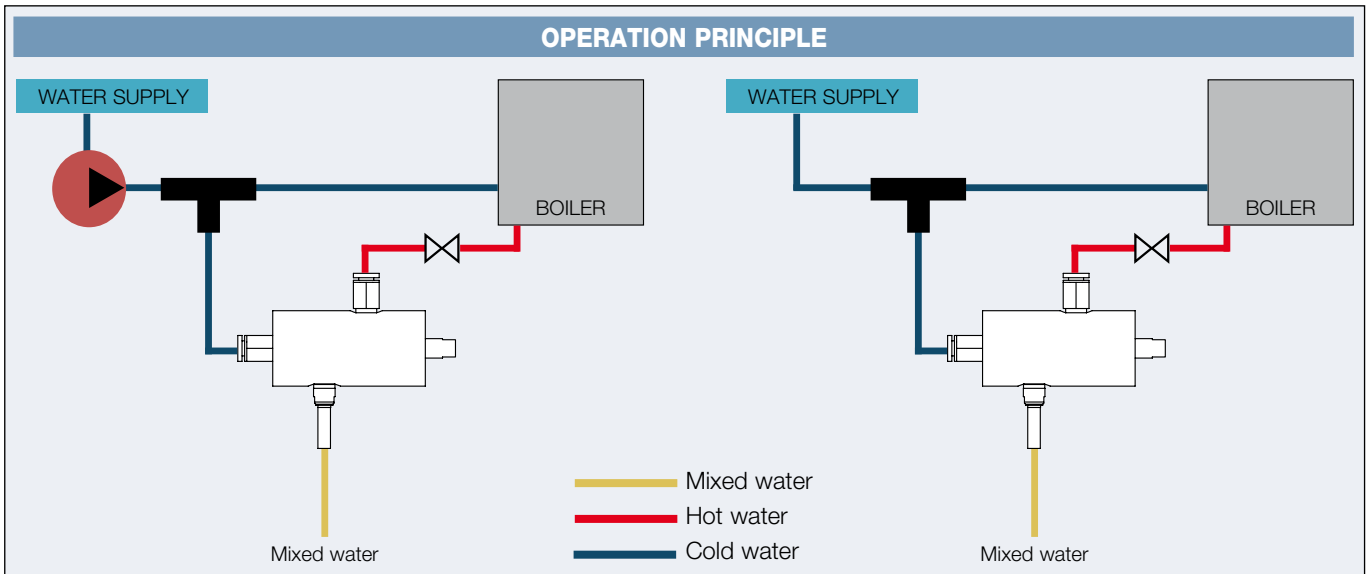


**DESIGN AND OPERATION PRINCIPLE**

The SMA actuator spring moves the shutter to mix hot and cold water; when there is no hot water (boiler outlet valve closed) the bias spring closes the cold water inlet.



**OPERATION PRINCIPLE**



Fluid-o-Tech reserves the right to alter the specifications indicated in this catalogue at any time and without prior notice.

**Fluid-o-Tech srl**  
 Via Leonardo da Vinci, 40  
 20094 Corsico, Milano, Italy  
 Tel. +39 02 9995 01  
 Fax +39 02 9995 0999  
 info@fluidotech.it

**Fluid-o-Tech Int'l Inc.**  
 161 Atwater St.,  
 06479 Plantsville CT (USA)  
 Tel. +1 (860) 276 9270  
 Fax +1 (860) 620 0193  
 info@fluid-o-tech.com

**Fluid-o-Tech Int'l Inc. Japan**  
 203, 2-17-19, Todoroki, Setagaya  
 Tokyo 158-0082, Japan  
 Tel. +81 (0) (3) 6432 1812  
 Fax +81 (0) (3) 6432 1813  
 erkkato@gmail.com

**Fluid-o-Tech Asia (Beijing) Co., Ltd**  
 Jingwei Industrial Zone,  
 Beifang Huairou, Beijing, 101400, PRC  
 Tel. +86 (0) (10) 6168 4650  
 Fax +86 (0) (10) 6168 4651  
 info@fluidotech-asia.com