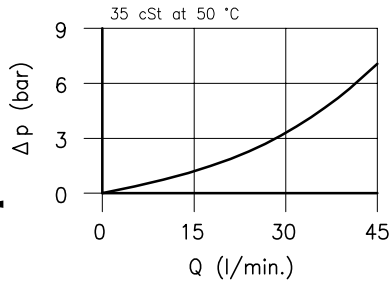
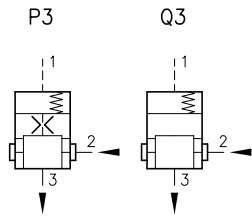


Technical features

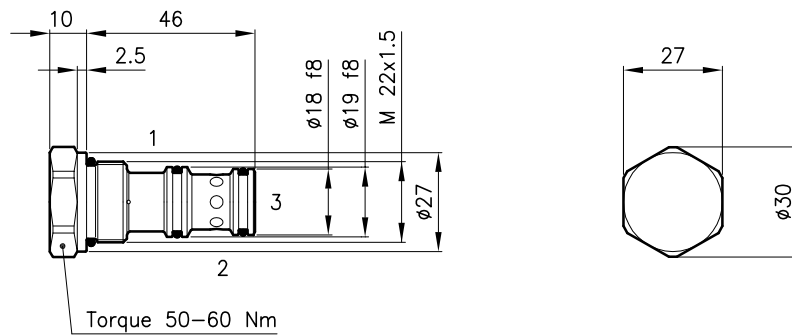
Logic valves ELP 30/P3 series, with internal orifice, are used as pressure reducing with remote pilot. The Q3 version, without orifice, if combined with a needle valve is a pressure compensated flow regulator at two way.

Versions



Cavity	(For dimensions see catalogue 17.000)	S 30/3
Nominal flow	(l/min.)	40
Max. pressure	(bar)	350
Ratio between areas A1/A3		1:1
Min. pressure difference	(bar)	7
Fluid viscosity range	(cSt)	2.8 - 380
Fluid temperature range	(°C)	-20 +80
Orifice diameter (P3 version)	(mm)	0.75
Mass	(kg)	0.130
Hydraulic fluid; mineral oil HM and HV		ISO 6074
Recommended filtration; 19/15 ISO 4466 (25 μ absolutes)		
Standard seals in Polyurethane and Buna N		

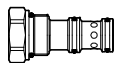
Dimensions



Ordering informations

ELP 30/P3

ELP 30 = Valve type



Version

P3 = pressure reducing

Q3 = flow regulator

Codes:

ELP 30/P3 36 011 103

ELP 30/Q3 36 011 104

External seals kit 90 620 104

ELP 30 valves can be assembled on standard bodies 30-C3 series; for dimensions see catalogue 16.010