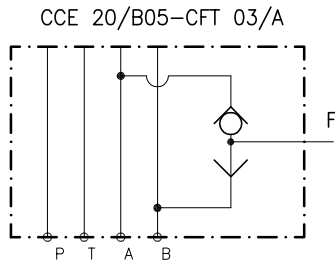
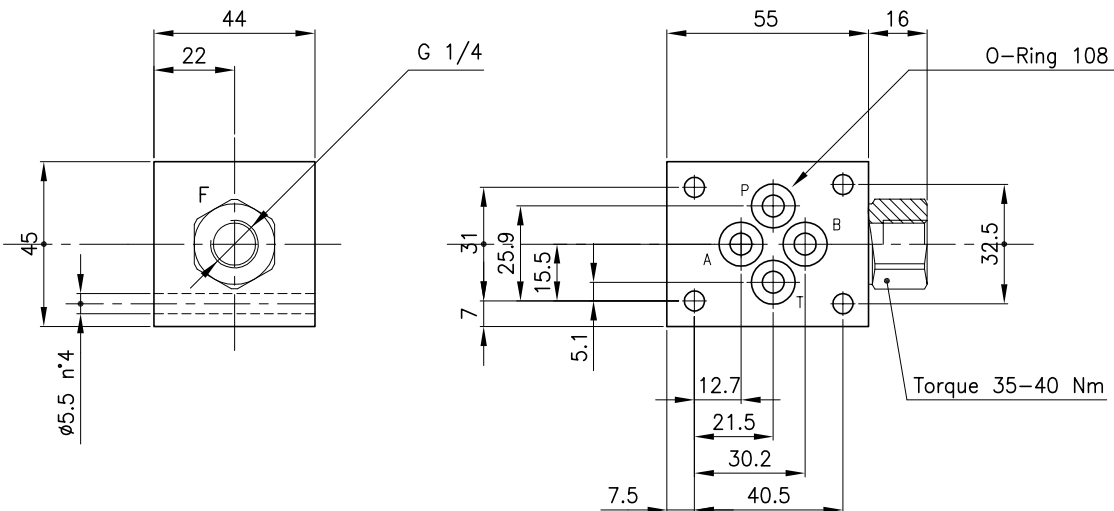


Schema



| | | |
|---|---------------------------------------|------------|
| Valve | (For features see catalogue 05.320) | CCE 20/B05 |
| Cavity | (For dimensions see catalogue 17.000) | S 20/2 |
| Max. flow | (l/min.) | 12 |
| Max. pressure | (bar) | 210 |
| Fluid viscosity range | (cSt) | 2.8 - 380 |
| Fluid temperature range | (°C) | -20 +80 |
| Mass | (aluminium body only) (kg) | 0.300 |
| Hydraulic fluid; mineral oil HM and HV | | ISO 6074 |
| Recommended filtration; 19/15 ISO 4466 (25 μ absolutes) | | |
| Standard seals in Polyurethane and Buna N | | |
| Standard body in aluminium | | |

Dimensions



Versions

20-CFT 03/A

Size

Version

Body:

20-CFT 03/A

28 147 268