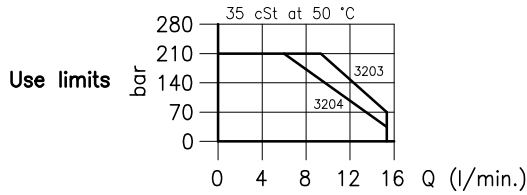
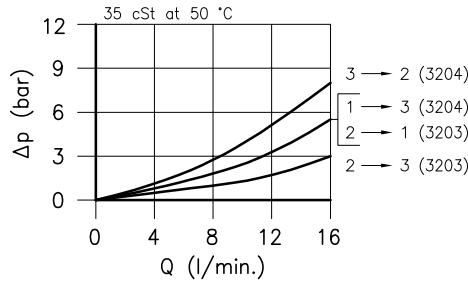
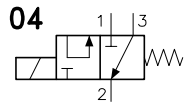
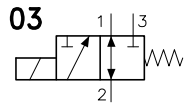
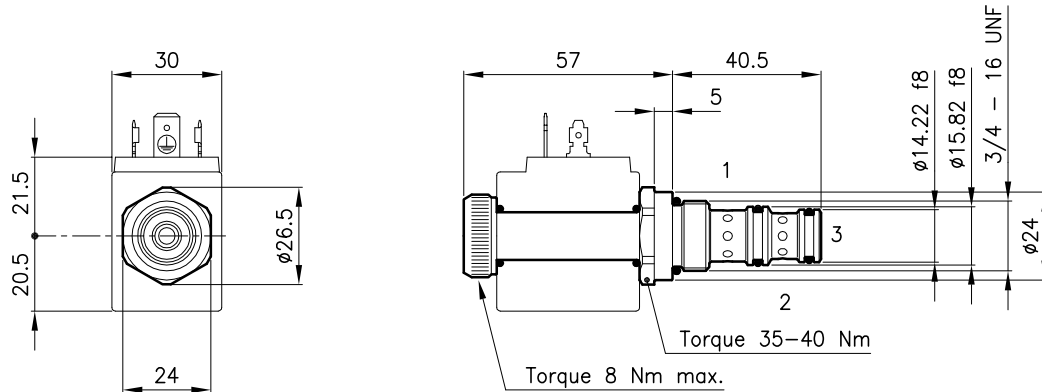


**Technical features**



Cavity (For dimensions see catalogue 17.000)	S 28/3
Max. flow (l/min.)	15
Max. pressure (bar)	210
Max. leakage (cm <sup>3</sup> /min.)	20
Response time (ms) <small>It change in function of circuit, pressure, flow and fluid viscosity.</small>	20 - 40 <small>(Mean value)</small>
Fluid viscosity range (cSt)	2.8 - 380
Fluid temperature range (°C)	-20 +80
Mass (kg)	0.130
Hydraulic fluid; mineral oil HM and HV	ISO 6074
Recommended filtration; 19/15 ISO 4466 (25 μ absolutes)	
Standard seals in Polyurethane and Buna N	

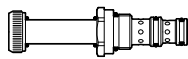
**Dimensions**



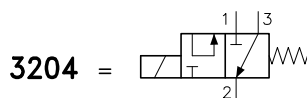
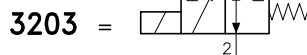
**Ordering informations**

**ETD 28/3203**

ETD 28/32.. = Valve type



Circuits



Codes:

ETD 28/3203	25 011 159
ETD 28/3204	25 011 160
External seals kit	90 620 118

ETD 28/32.. valves can be assembled on standard bodies 28-C3 series; for dimensions see catalogue 16.010

On the ETD 28 valves must be assembled the Coils B28 series; for dimensions, features and codes see catalogue 09.902.