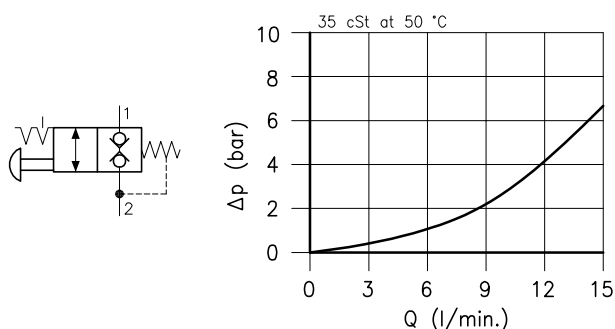
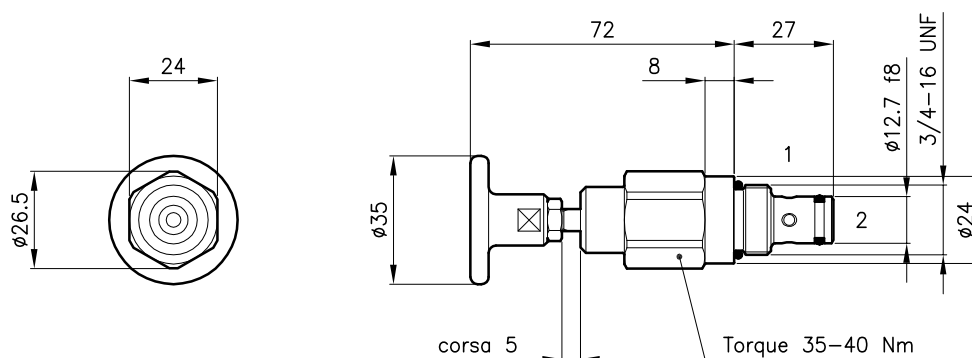


Technical features


| | |
|---|-----------|
| Cavity (For dimensions see catalogue 17.001) | S 28/2 |
| Max. flow (l/min.) | 15 |
| Max. pressure (bar) | 315 |
| Driving force (min.) (N) | 35 |
| Fluid viscosity range (cSt) | 2.8 - 380 |
| Fluid temperature range (°C) | -20 +80 |
| Mass (kg) | 0.140 |
| Hydraulic fluid; mineral oil HM and HV | ISO 6074 |
| Recommended filtration; 19/15 ISO 4466 (25 μ absolutes) | |
| Standard seals in Polyurethane and Buna N | |

Dimensions

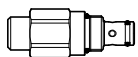
Pressure of chamber 2 influences the necessary force for valve's drive
(35 N + 28 N every 10 bar in chamber 2).



External parts with anticorrosive treatment.

Ordering informations
MCD 28/2202-PB

MCD 28 = Valve type



Circuit

2202 =

Driving type

PB = Push type detented



Codes:

MCD 28/2202-PB 22 011 165

External seals kit 90 620 112

ECD 28/2202 valves can be assembled on standard bodies 28-L0 series; for dimensions see catalogue 16.010