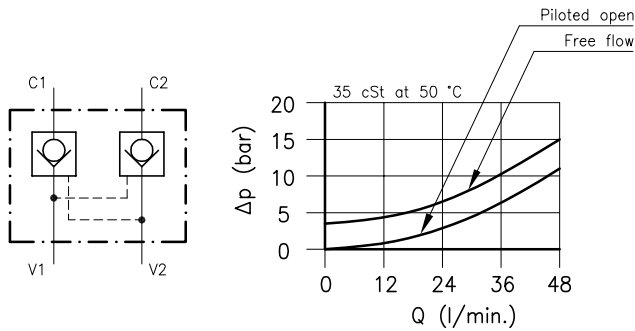
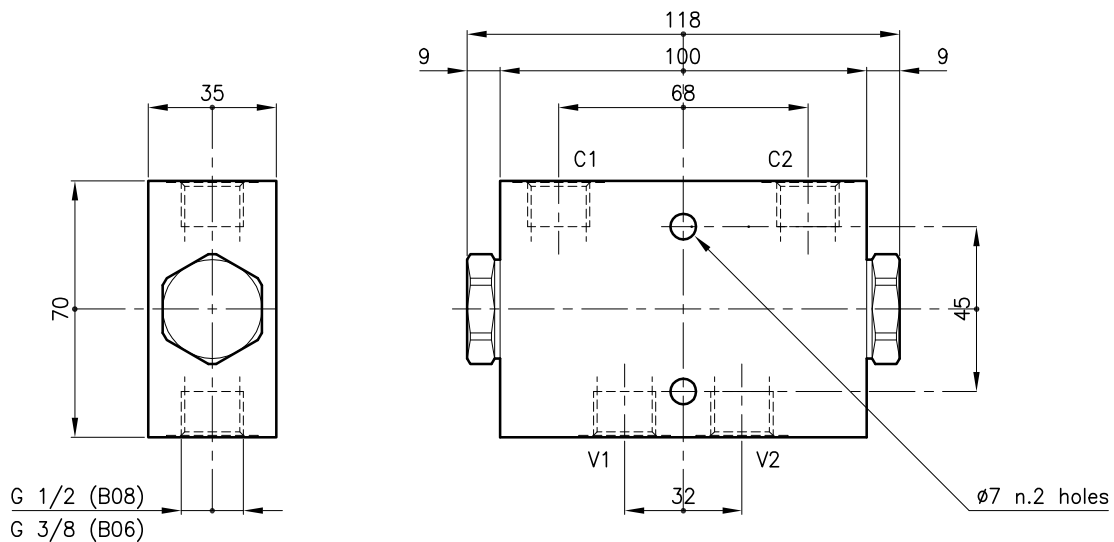


**Technical features**



Valves	(For features see catalogue 05.060)	CAE 30/M
Nominal flow	(l/min.)	40
Max. pressure	(bar)	350
Pilot ratio		5:1
Pilot volume	(cm <sup>3</sup> )	0.80
Fluid viscosity range	(cSt)	2.8 - 380
Fluid temperature range	(°C)	-20 +80
Mass	(kg)	2.100
Hydraulic fluid; mineral oil HM and HV		ISO 6074
Recommended filtration; 19/15 ISO 4466 (25 μ absolutes)		
Standard seals in Polyurethane and Buna N		

**Dimensions**



**Ordering informations**

**CAE 30/M-S-CSL 57-B08**

Valves type \_\_\_\_\_

Standard spring  
**M** = 3.5 bar \_\_\_\_\_

**S** = Without O-Ring on the pilot piston  
(Omit in Standard version) \_\_\_\_\_

Version \_\_\_\_\_

Standard ports  
**B06** = G 3/8 ISO 228 \_\_\_\_\_  
**B08** = G 1/2 ISO 228 \_\_\_\_\_

Codes:

CAE 30/M-CSL 57-B06	32 011 126
CAE 30/M-CSL 57-B08	32 011 127
CAE 30/M-S-CSL 57-B06	32 011 128
CAE 30/M-S-CSL 57-B08	32 011 129

Only body codes:

Body type 30-CSL 57-B06/FE	38 144 180
Body type 30-CSL 57-B08/FE	38 144 181