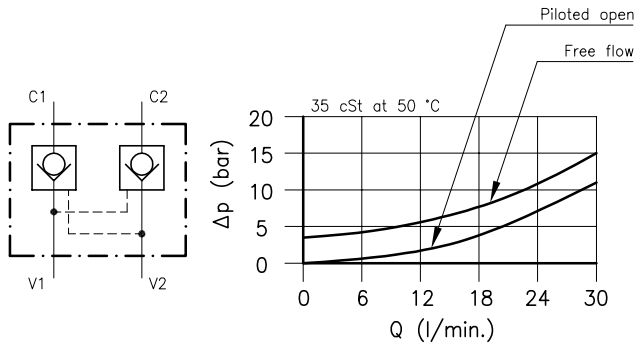
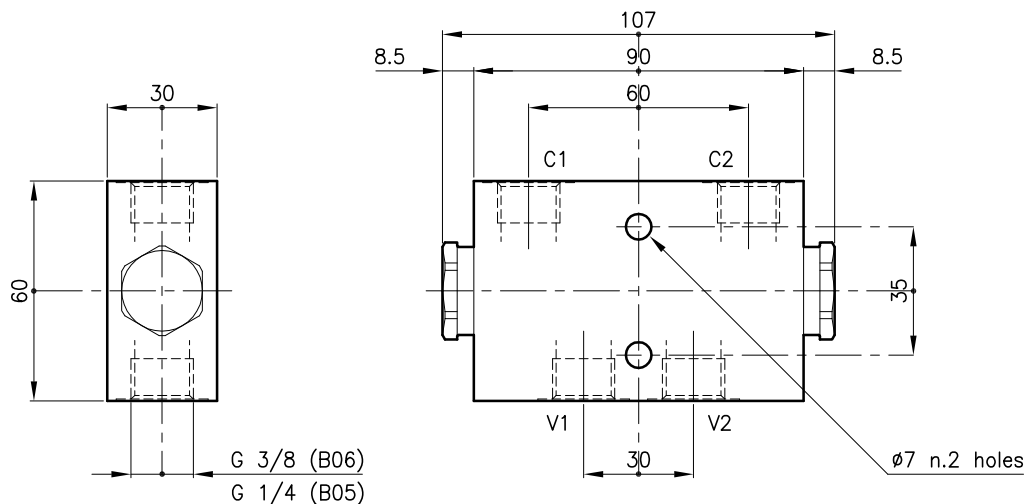


Technical features



Valves	(For features see catalogue 05.050)	CAE 20/M
Nominal flow	(l/min.)	25
Max. pressure	(bar)	350
Pilot ratio		5:1
Pilot volume	(cm ³)	0.30
Fluid viscosity range	(cSt)	2.8 - 380
Fluid temperature range	(°C)	-20 +80
Mass	(kg)	1.370
Hydraulic fluid; mineral oil HM and HV		ISO 6074
Recommended filtration; 19/15 ISO 4466 (25 μ absolutes)		
Standard seals in Polyurethane and Buna N		

Dimensions



Ordering informations

CAE 20/M-S-CSL 57-B06

Valves type _____

Standard spring _____

M = 3.5 bar _____

S = Without O-Ring on the pilot piston (Omit in Standard version) _____

Version _____

Standard ports

B05 = G 1/4 ISO 228 _____

B06 = G 3/8 ISO 228 _____

Codes:

CAE 20/M-CSL 57-B05 22 011 118

CAE 20/M-CSL 57-B06 22 011 119

CAE 20/M-S-CSL 57-B05 22 011 122

CAE 20/M-S-CSL 57-B06 22 011 123

Only body codes:

Body type 20-CSL 57-B05/FE 28 144 125

Body type 20-CSL 57-B06/FE 28 144 126