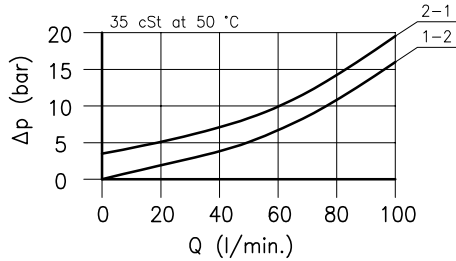
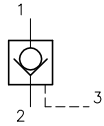
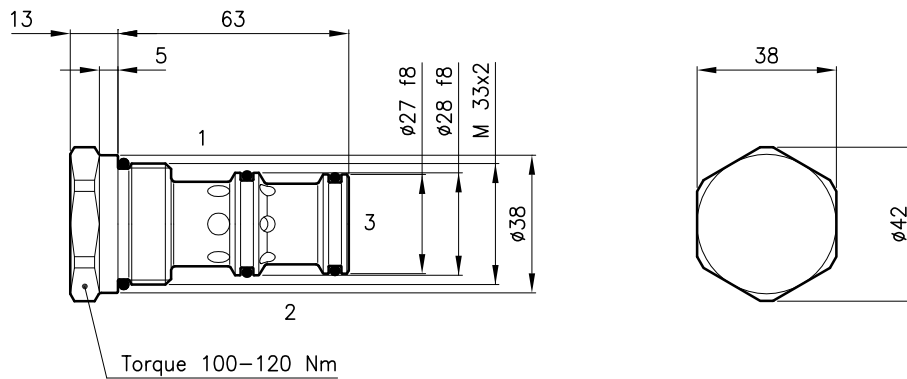


Technical features



Cavity	(For dimensions see catalogue 17.000)	S 50/3
Nominal flow	(l/min.)	80
Max. pressure	(bar)	350
Pilot ratio		2.5:1
Pilot volume	(cm ³)	0.25
Fluid viscosity range	(cSt)	2.8 - 380
Fluid temperature range	(°C)	-20 +80
Mass	(kg)	0.260
Hydraulic fluid; mineral oil HM and HV ISO 6074		
Recommended filtration; 19/15 ISO 4466 (25 μ absolutes)		
Standard seals in Polyurethane and Buna N		

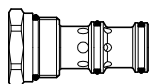
Dimensions



Ordering informations

CAP 50/M-S

CAP 50 = Valve type



Standard spring

M = 3.5 bar

S = Without O-Ring on the pilot piston
(Omit in Standard version)

Codes:

CAP 50/M	52 011 103
CAP 50/M-S	52 011 104
External seals kit	90 620 107

CAP 50 valves can be assembled on standard bodies 50-C3 series; for dimensions see catalogue 16.010