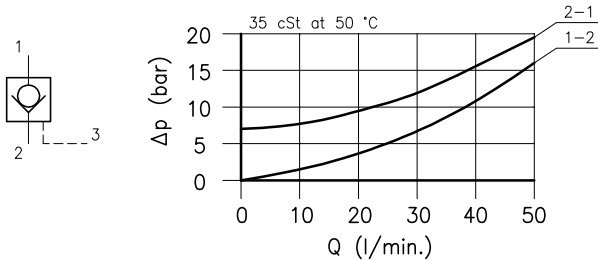
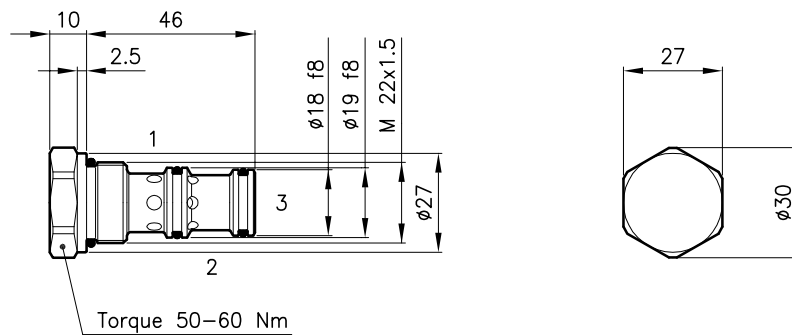


Technical features



Cavity	(For dimensions see catalogue 17.000)	S 30/3
Nominal flow	(l/min.)	40
Max. pressure	(bar)	350
Pilot ratio		3.4:1
Pilot volume	(cm ³)	0.10
Fluid viscosity range	(cSt)	2.8 - 380
Fluid temperature range	(°C)	-20 +80
Mass	(kg)	0.120
Hydraulic fluid; mineral oil HM and HV		ISO 6074
Recommended filtration; 19/15 ISO 4466 (25 μ absolutes)		
Standard seals in Polyurethane and Buna N		

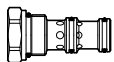
Dimensions



Ordering informations

CAP 30/M-3.4-S

CAP 30 = Valve type



Standard spring

M = 7 bar

3.4 = Pilot ratio 3.4:1

S = Without O-Ring on the pilot piston
(Omit in Standard version)

Codes:

CAP 30/M-3.4 32 011 156

CAP 30/M-3.4-S 32 011 157

External seals kit 90 620 104

CAP 30 valves can be assembled on standard bodies 30-C3 series; for dimensions see catalogue 16.010