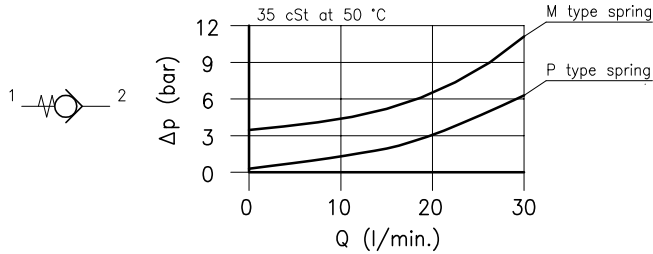
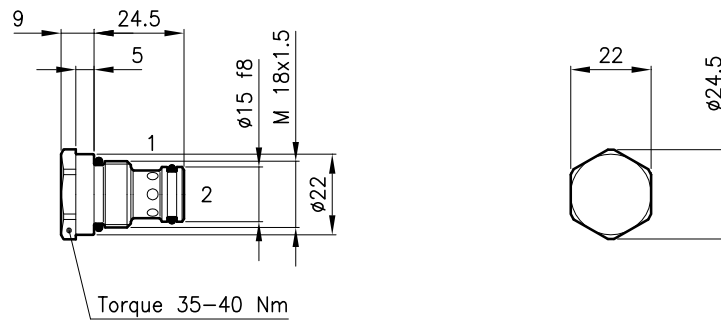


Technical features



Cavity (For dimensions see catalogue 17.000)	S 20/2
Nominal flow (l/min.)	25
Max. pressure (bar)	210
Cracking pressure (bar)	0.35-3.5
Fluid viscosity range (cSt)	2.8 - 380
Fluid temperature range (°C)	-20 +80
Mass (kg)	0.050
Hydraulic fluid; mineral oil HM and HV	ISO 6074
Recommended filtration; 19/15 ISO 4466 (25 μ absolutes)	
Standard seals in Polyurethane and Buna N	

Dimensions



Ordering informations

CAB 20/M

CAB 20 = Valve type



Standard springs

P = 0.35 bar

M = 3.5 bar

Codes:

CAB 20/P 22 011 100

CAB 20/M 22 011 101

External seals kit 90 620 100

CAB 20 valves can be assembled on standard bodies 20-LO series; for dimensions see catalogue 16.010