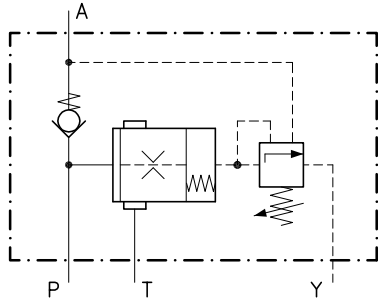


Technical features

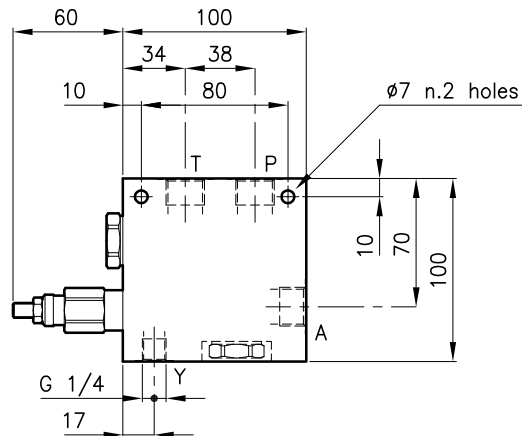
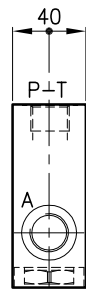
They are used to unload a pump once a certain pressure has been reached in the main circuit.

They are either used on accumulator circuit unload the pump when the accumulator charge pressure has been reached or in a two pump circuit to unload the low pressure pump.



Valves	(For features see catalogue 04.075)	LCS 20
	(For features see catalogue 11.010)	ELP 30/P1
	(For features see catalogue 05.060)	CAE 30/P
Max. flow	(l/min.)	60
Max. pressure in P	(bar)	315
Max. pressure on A	(bar)	420
Differential area	%	88 ± 1.5 %
Fluid viscosity range	(cSt)	2.8 - 380
Fluid temperature range	(°C)	-20 +80
Mass	(kg)	1.500
Hydraulic fluid; mineral oil HM and HV		ISO 6074
Recommended filtration; 19/15 ISO 4466 (25 μ absolutes)		
Standard seals in Polyurethane and Buna N		

Dimensions



Ordering informations

DPA 30/D-N-B08

Valve type

Standard springs (LCS 20)

Type Setting range

D = 10 - 210 bar

Q = 70 - 315 bar

Adjustment type

N = Standard adjustment

Standard ports

B06 = G 3/8 ISO 228

B08 = G 1/2 ISO 228

Codes:

DPA 30/D-N-B06 31 011 231
DPA 30/Q-N-B06 31 011 232

DPA 30/D-N-B08 31 011 234
DPA 30/Q-N-B08 31 011 235

Only body codes:

Body type 30-DPA-B06 38 144 178
Body type 30-DPA-B08 38 144 179