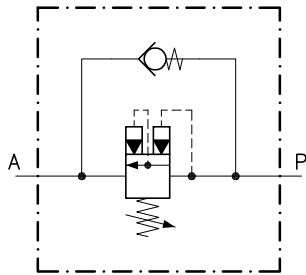


Technical features

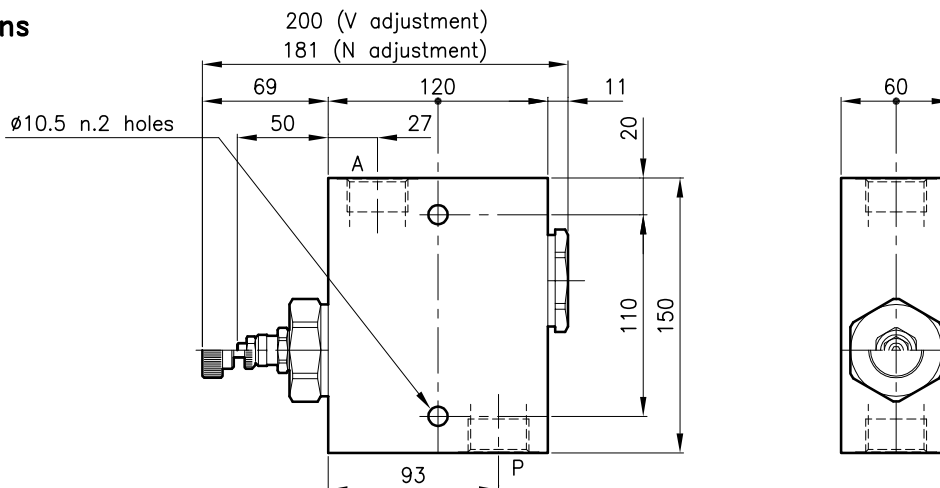
They are used to unload a line under pressure or as sequence valve.

At setting pressure achievement the valve opens itself allowing the fluid free-flow passage. When pressure drop under a value lower than 7 bar, the valve closes again. The annexed by-pass valve allows the reverse free-flow.



Valves	(For features see catalogue 04.030)	LPQ 70
	(For features see catalogue 05.080)	CAE 70/P
Max. flow	(l/min.)	320
Max. pressure in P	(bar)	420
Max. pressure on A	(bar)	350
Max. reseal pressure	(bar)	7
Fluid viscosity range	(cSt)	2.8 - 380
Fluid temperature range	(°C)	-20 +80
Mass	(kg)	4.300
Cracking pressure 95% of setting value		
Cracking pressure defined with 1 l/min.		
Hydraulic fluid; mineral oil HM and HV ISO 6074		
Recommended filtration; 19/15 ISO 4466 (25 μ absolutes)		
Standard seals in Polyurethane and Buna N		

Dimensions



Ordering informations

LPQ 70/D-N-CSL 10-B20

Valve type

Standard springs

Type Setting value

D = 14 - 210 bar

Q = 105 - 420 bar

Adjustment type

N = Standard adjustment

V = Handknob adjustment

Version

Standard ports

B16 = G 1 ISO 228

B20 = G 1.1/4 ISO 228

Codes:

LPQ 70/D-N-CSL 10-B16 71 011 130

LPQ 70/Q-N-CSL 10-B16 71 011 131

LPQ 70/D-V-CSL 10-B16 71 011 132

LPQ 70/Q-V-CSL 10-B16 71 011 133

LPQ 70/D-N-CSL 10-B20 71 011 134

LPQ 70/Q-N-CSL 10-B20 71 011 135

LPQ 70/D-V-CSL 10-B20 71 011 136

LPQ 70/Q-V-CSL 10-B20 71 011 137

Only body codes:

Body type 70-CSL 10-B16 78 144 110

Body type 70-CSL 10-B20 78 144 111