



1. APPLICATION

Electrical 2/2 directional control valve with a nominal width of 5 mm. High-quality valve for lubricants in static and dynamic single line systems.

2. CONSTRUCTION

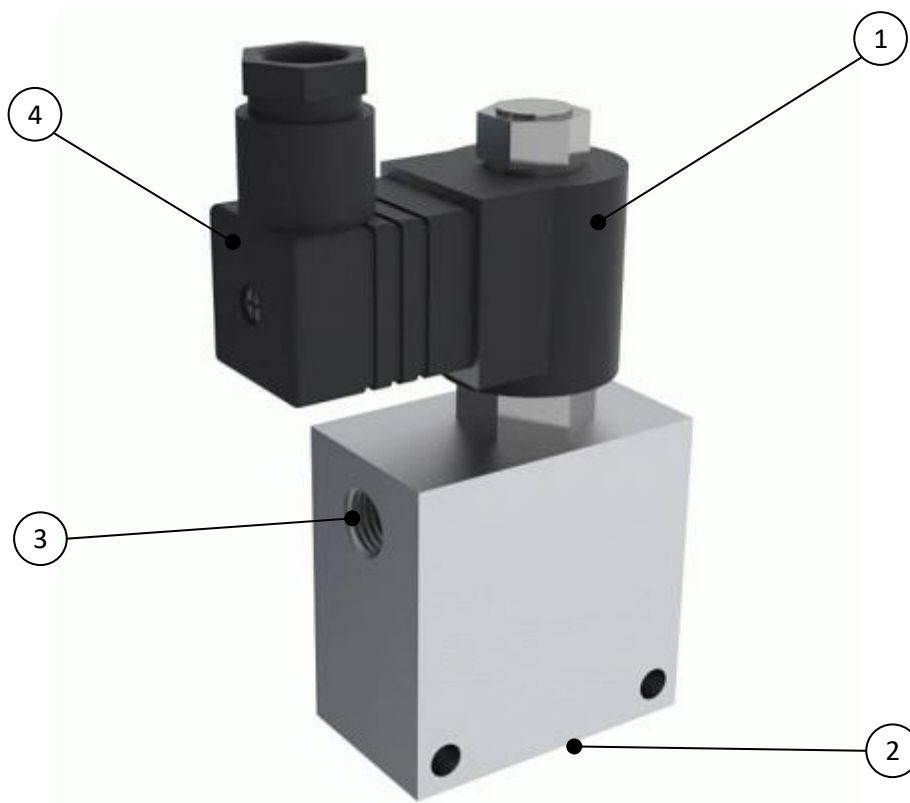


Figure 1: 2/2 Control valve

1. Solenoid coil
3. Connection A

2. Connection B
4. Angle connector



3. TECHNICAL DATA

General	
Type	2/2 solenoid valve
Lubrication line connection	G1/4"
Ambient temperature	0° bis 80°C
Installation position	Any
Protection class as per EN60529	IP 65
Weight	0,560 kg
Flow direction	Two-sided A - B (B - A)
Seal	Viton

Hydraulic	
Operating pressure	0 - 50 bar
Operating medium	Mineral oil, fluid grease
Range of viscosity	20 to 750 mm ² /s, NLGI 000-0*

* as per fluid grease release list

Drive	
Type of drive	Electrical
Supply voltage	24 V DC
Supply current	0,52 A – 1,04 A
Power consumption	12,5 – 25 W
Connection	Right-angle connector DIN 43650-A



4. DIMENSIONS

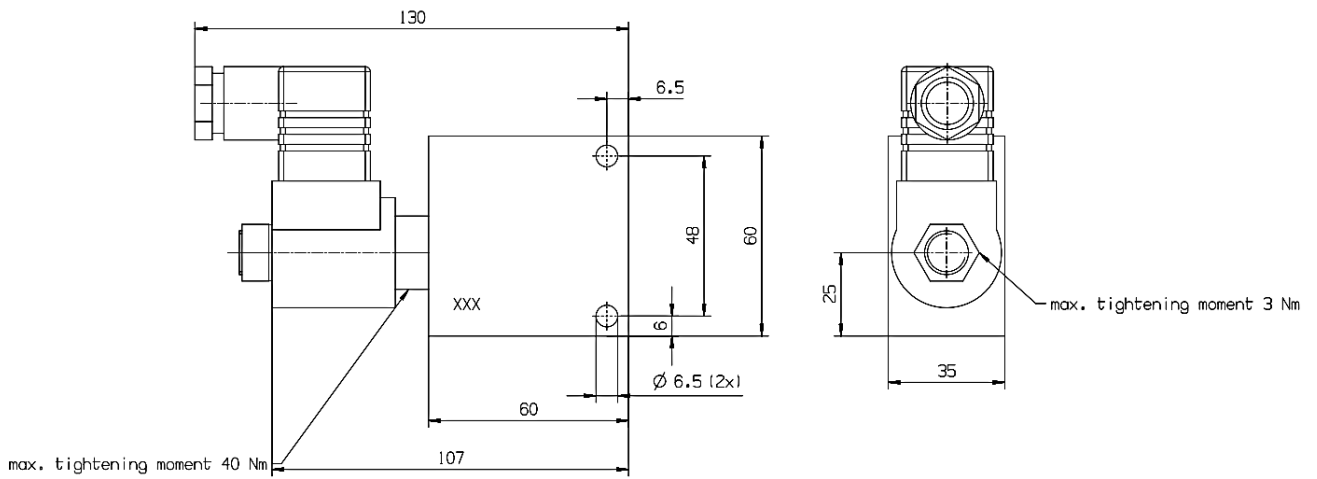


Figure 2: Dimensions

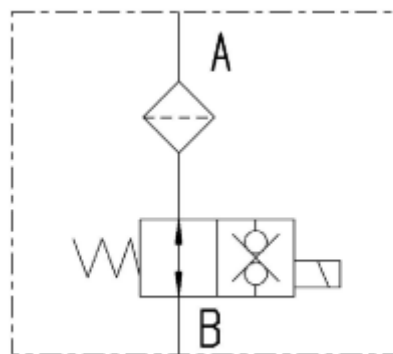


Figure 3: Fluid plan



5. INTERFACES

Interface Type	Interface Format	Signal
<i>Drive connection</i>	<i>Right angle connector DIN 43650-A</i>	<i>24 V DC</i>
<i>Valve output</i>	<i>G1/4"</i>	<i>Operating medium</i>
<i>Valve input</i>	<i>G1/4"</i>	<i>Operating medium</i>

6. SCOPE OF APPLICATION

Designation	Duty cycle	Function	Article number
<i>2/2 control valve</i>	<i>100%</i>	<i>NO (normal open)</i>	P30023810
<i>2/2 control valve</i>	<i>100%</i>	<i>NC (normal close)</i>	P30023811
<i>2/2 control valve</i>	<i>50% (15min)</i>	<i>NO (normal open)</i>	P30023816