



## CHARACTERISTICS

- 1 AIR/OIL INLET
- 2 OR 3 OUTPUTS/DIVISIONS POSSIBLE
- DROPSA OPTIMIZED AIR-FLOW ORIFICE SYSTEM TO BEST BALANCE OUTPUT
- ALTERNATE INLET CAN BE PORTED RADIALLY
- MODULAR ORIFICE DESIGN MEANS IT CAN BE DESIGNED TO FIT INTO PRACTICALLY ANY EXISTING MACHINED CAVITY

## APPLICATIONS

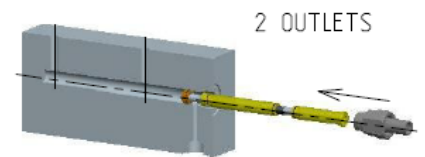
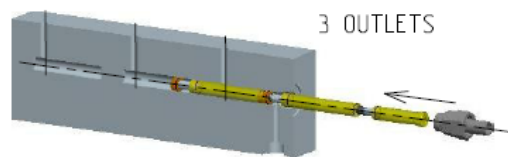
- HEAVY INDUSTRY AIR OIL CASTINGS
- ROLLING MILLS
- OEM APPLICATIONS

## AIR/OIL LUBRICATION SPLITTER TUBE FOR OEM SYSTEMS

This Air/Oil lubrication splitter is a tube based proportional divider. An Air/Oil mixture is fed into the inlet and the splitter divides the mixture into two or three outlets.

Dropsa has used extensive CFD and practical data to optimize the balancing of pressure and output delivery to achieve a more accurate division of the lubrication air/oil flow to the lubrication points.

The Air/Oil Lubrication splitters are used generally for lubrication of bearings in rolling mills and levelling machines.



## ORDERING INFORMATION

Dropsa uses standardized Air/Oil orifices that have been specifically developed using advanced computer simulation as well as practical experimentation. These are then incorporated into the assembly to give the best performance possible.

As each air/oil tube splitter unit is designed to fit a specific OEM cavity it must be ordered and constructed specifically for the application.

**To facilitate the collection of the construction data for the tube, a work sheet is provided on the next page for the customer in order to ensure all the essential data is present to correctly manufacture and configure the air oil splitter**

## AIR/OIL LUBRICATION SPLITTER

### CUSTOMER SPECIFICATION WORK SHEET

Please complete the following dimensional information and return to Dropsa

#### CONTACTS

[www.dropsa.com](http://www.dropsa.com)

[sales@dropsa.com](mailto:sales@dropsa.com)

#### ITALIA

Dropsa SpA  
t. +39 02-250791  
f. +39 02-25079767

#### U.K.

Dropsa (UK) Ltd  
t. +44 (0)1784-431177  
f. +44 (0)1784-438598

#### GERMANY

Dropsa GmbH  
t. +49 (0)211-394-011  
f. +49 (0)211-394-013

#### FRANCE

Dropsa Ame  
t. +33 (0)1-3993-0033  
f. +33 (0)1-3986-2636

#### CHINA

Dropsa Lubrication  
Systems (Shanghai)  
Co., Ltd  
t. +86 (021) 67740275  
f. +86 (021) 67740205

#### U.S.A.

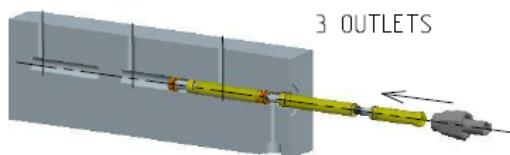
Dropsa Corporation  
t. +1 586-566-1540  
f. +1 586-566-1541

#### AUSTRALIA

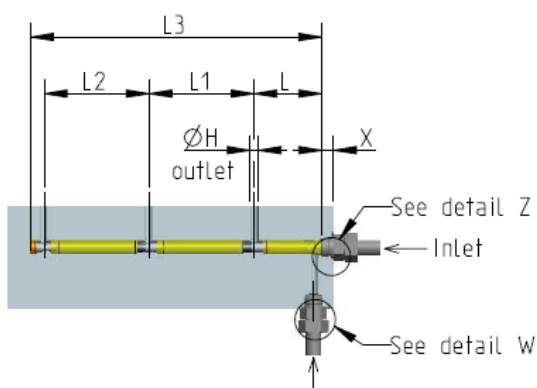
Dropsa Australia Ltd.  
t. +61 (02)-9938-6644  
f. +61 (0)2-9938-6611

#### BRAZIL

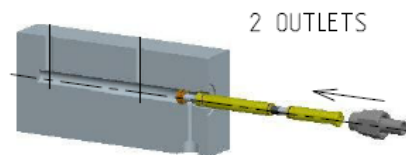
Dropsa do Brasil Ind.e  
Com.Lta  
t. +55 (0)11-563-10007  
f. +55 (0)11-563-19408



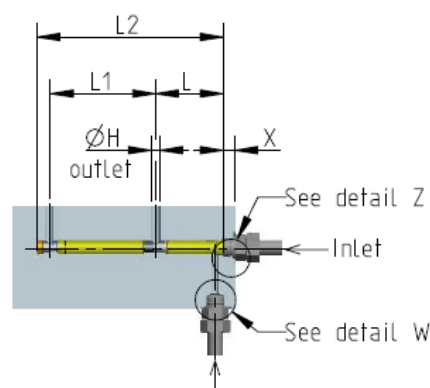
3 OUTLETS



Alternate Air/Oil inlet



2 OUTLETS

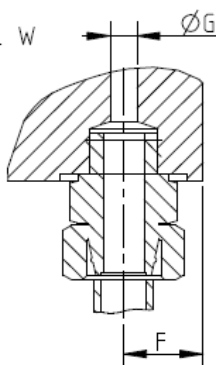


Alternate Air/Oil inlet

TUBE GEOMETRY - 3 OUTLETS						
L	L1	L2	L3	X	ØH	ØA <small>(tol. ±) See detail Z</small>

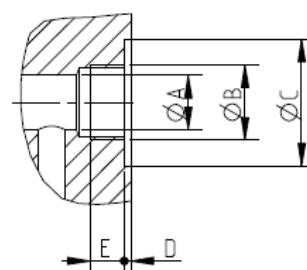
TUBE GEOMETRY - 2 OUTLETS					
L	L1	L2	X	ØH	ØA <small>(tol. ±) See detail Z</small>

Detail W



ALTERNATIVE INLET	
F	ØG

Detail Z  
Inlet port details



INLET PORT DIMENSIONS			
ØB	ØC	D	E