

SQ □ G series Fitting

Mini type pressure gauge, Pressure gauge fitting

CHELIC®



► Feature

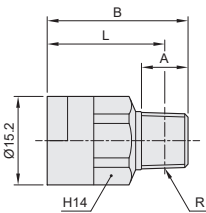
1. Applicable to detect piping pressures.
2. Small and easy to manage in varied occasion.

► SQCG series Pressure gauge fitting

Metric specification



Thread size Rc (PT)	Model	A	B	L	Weight (g)
1/8"	SQCG 15 - 01	8	24	20	14



SQ □

MSQ □

SP □

SQ □ J

SQR □

SQ □ G

RQL

M □

Stainless
steel fitting

Brass
Fitting

Full copper
fitting

□ SC

QS □

QMC

QT

QH □

QV □

QST

PU Tube

SQ □ G series Fitting

Pressure gauge fitting - SQMG, SQLG, SQEG series

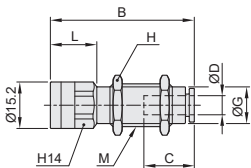
CHELIC_®

► SQMG series Bulkhead straight pressure gauge fitting



Metric specification

Port size ØD	Thread size M	Model	B	C	L	ØG	Across flats H	Effective orifice mm ²	Weight (g)
Ø6	M14x1.0	SQMG 6 - 6	47.1	16.5	15.2	12	17	10	22



Inch specification

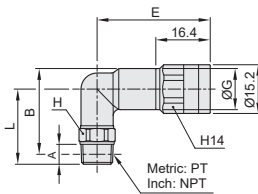
Port size ØD	Thread size M	Model	B	C	L	ØG	Across flats H	Effective orifice mm ²	Weight (g)
1/4"	M14x1.0	SQMG 1/4 - 1/4	47.1	16.5	15.2	12	17	10	22

► SQLG series Male elbow pressure gauge fitting



Metric specification

Port size ØD	Thread size Rc (PT)	Model	A	B	E	ØG	L	Across flats H	Effective orifice mm ²	Weight (g)
Ø6	M5	SQLG 6 - M5	3.6	22.5	34.1	12.4	19	10	3.5	20
	1/8"	SQLG 6 - 01	6	25.9	34.1	12.4	22.8	10	10	22
	1/4"	SQLG 6 - 02	9	27.7	34.1	12.4	27.1	14	10	22



Inch specification

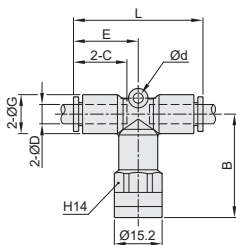
Port size ØD	Thread size NR/ NPT	Model	A	B	E	ØG	L	Across flats H	Effective orifice mm ²	Weight (g)
1/4"	NR10/32"	SQLG 1/4"-10/32"	3.6	22.5	34.1	12.4	19	10	3.5	20
	1/8"	SQLG 1/4" - 01	6	25.9	34.1	12.4	22.8	10	10	22
	1/4"	SQLG 1/4" - 02	9	27.7	34.1	12.4	27.1	14	10	22

► SQEG series Branch tee pressure gauge fitting



Metric specification

Port size ØD	Model	B	C	Ød	E	ØG	L	Effective orifice mm ²	Weight (g)
Ø6	SQEG 6	32.9	17	3.2	20.6	12.4	41.2	10	22



Inch specification

Port size ØD	Model	B	C	Ød	E	ØG	L	Effective orifice mm ²	Weight (g)
1/4"	SQEG 1/4"	32.9	17	3.2	20.6	12.4	41.2	10	22