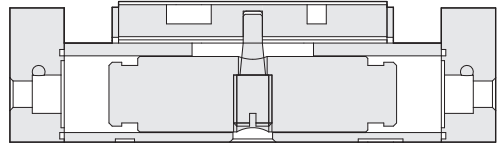
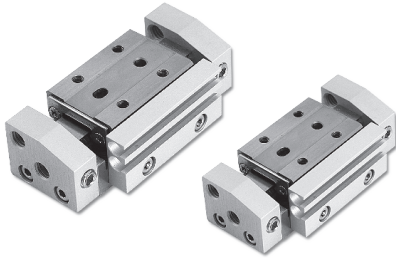


MBX series Air Slide Table

Product features/ Code of order

CHELIC

Internal structure



Specification

Item	Model	MBX 6	MBX 8	MBX 10	MBX 12	MBX 16	MBX 20
Bore size	mm	Ø6	Ø8	Ø10	Ø12	Ø16	Ø20
Action		Double acting					
Fluid		Air					
Pressure range	kgf/cm ² (kPa)	1.5 ~ 6 (150 ~ 600)					
Max. operating pressure	kgf/cm ² (kPa)	6.5 (650)					
Ambient and fluid temperature	°C	0 ~ 60					
Piston speed	mm/sec	100 ~ 500					
Lubrication		Lubrication free type					
Port size		M5X0.8					
Cushion		Rubber cushion					

Standard stroke

Unit : mm

Bore size	Stroke
Ø6	05, 10
Ø8	10, 20
Ø10	10, 20
Ø12	15, 25
Ø16	20, 30
Ø20	25, 35

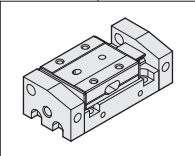
How to Select Shock absorber

Bore size	Shock absorber model	Max. Absorbent
12	SAT-0806	0.1 Kgf.m
16	SAT-1007	0.15 Kgf.m
20	SAT-1007	0.15 Kgf.m

Code of order

MBX
12
×
15
-
S
G
2
-
A
2

Model



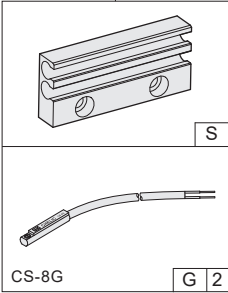
Bore size

6 - Ø 6
8 - Ø 8
10 - Ø 10
12 - Ø 12
16 - Ø 16
20 - Ø 20

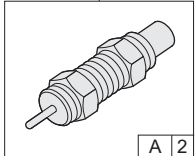
Stroke

Ø6 - 05, 10
Ø8 - 10, 20
Ø10 - 10, 20
Ø12 - 15, 25
Ø16 - 20, 30
Ø20 - 25, 35

Sensor switch



Shock absorber



MBX:
Air Slide Table

None :
Without shock absorber
and Metal stopper
A : Shock absorber
 (Not suitable for bore size Ø6,Ø8,Ø10)
B : Metal stopper
2 : Quantity of Sensor absorber
 1 = 1 PCS
 2 = 2 PCS
 (Option)

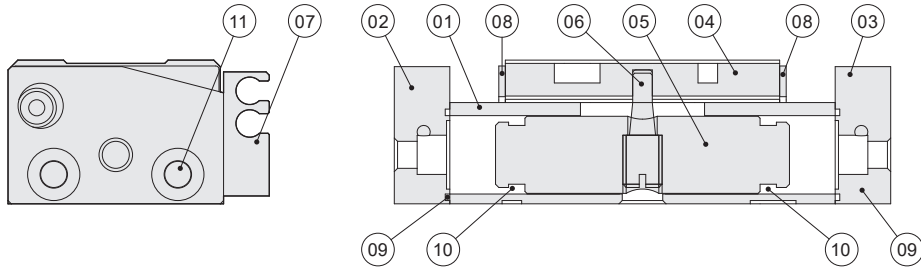
None :
No magnet and sensor switch holder
S : With magnet and sensor switch holder
G : Sensor switch mark (CS-8G)
2 : Quantity of Sensor switch
 1 = 1 PCS 2 = 2 PCS
 (Option)

MBX series Air Slide Table

Product features

CHELIC

Internal structure



Components and material list

No	Item	Material	No	Item	Material
01	Body	Stainless steel	07	Sensor switch holder(Optional)	Aluminum alloy
02	Left end cap	Aluminum alloy	08	Baffle	Stainless steel
03	Right end cap	Aluminum alloy	09	End cap O-ring	NBR
04	Slide base	Stainless steel	10	Shaft packing	NBR
05	Piston	Stainless steel	11	End cap set screw	Alloy steel
06	Dowel pin	Alloy steel			

Packing and O-ring material list

Unit: mm

Item	Shaft packing	End cap O-ring
Quantity	2	2
Bore size		
Ø6	MYA-03	Ø5 x Ø0.48
Ø8	MYA-05	Ø8 x Ø1
Ø10	MYA-07	Ø10 x Ø1
Ø12	MYA-09	Ø12 x Ø1
Ø16	MYA-12	Ø16 x Ø1
Ø20	MYA-16	Ø20 x Ø1

Note: The piston packing and shaft packing are from MITSUBISHI, SAKAGAMI or the same good level of quality material.

Product weight

Model	Stroke	Weight(kg)
MBX - 6	05 st	0.085
	10 st	0.095
MBX - 8	10 st	0.125
	20 st	0.208
MBX - 10	10 st	0.167
	20 st	0.266
MBX - 12	15 st	0.274
	25 st	0.4
MBX - 16	20 st	0.815
	30 st	1.03
MBX - 20	25 st	1.23
	35 st	1.45

MSR(L)2

FMR(L)

MQX

MTX

MDQ2

MDQA

MDX

MDXL

MBX

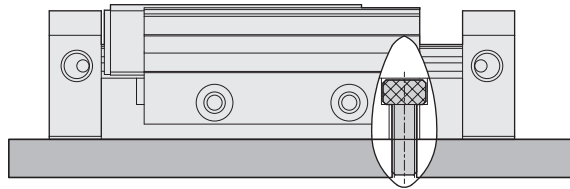
MGX

MBX series Air Slide Table

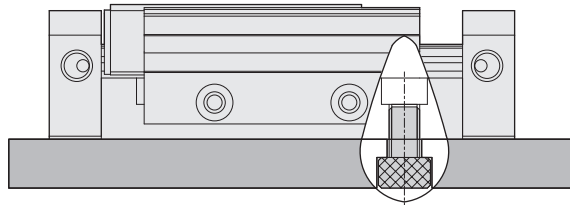
Mounting type

CHELIC

Mounting type

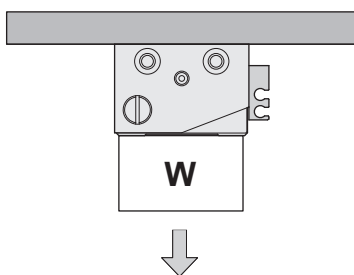
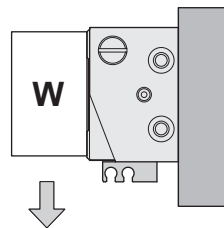
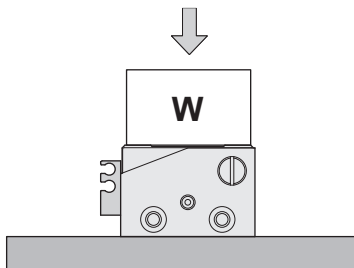


Top mounting



Bottom mounting

Maximum allowable load weight



Unit: kg

Bore size	Maximum allowable load weight
Ø06	0.32
Ø08	0.75
Ø10	1.20
Ø12	1.70
Ø16	3.0
Ø20	4.0

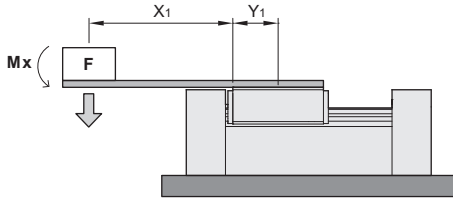
MBX series Air Slide Table

Installation

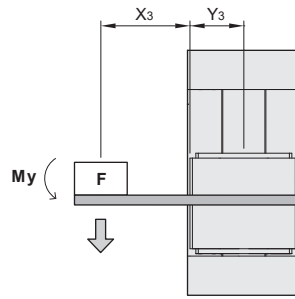
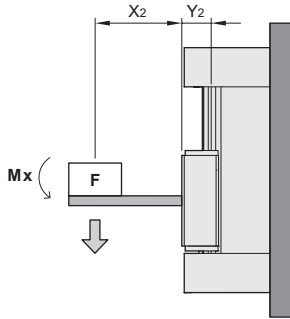
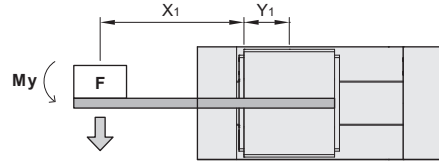
CHELIC

Allowable static load

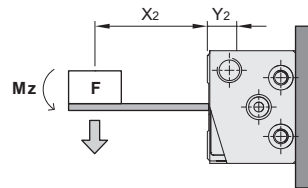
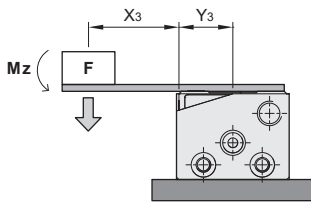
X axial force moment



Y axial force moment



Z axial force moment



Bore size	Stroke	Y ₁	Y ₂	Y ₃	Allowable static load M _{max} (N · m)		
					M _x	M _y	M _z
Ø06	05	18.5	6	9	1.40	1.40	2.60
	10	23.5			2.30	2.30	3.50
Ø08	10	15.5	5.7	11	1.40	1.40	2.60
	20	25.5			5.70	5.70	5.60
Ø10	10	15.5	7.5	13.5	1.70	1.70	4.20
	20	25.5			6.30	6.30	8.50
Ø12	15	20.5	9.0	16.0	4.50	4.50	9.80
	25	30.5			13.0	13.0	17.0
Ø16	20	29.5	13.0	23.0	12.0	12.0	26.0
	30	37.5			28.0	28.0	41.0
Ø20	25	38.5	11.5	25.0	15.0	15.0	32.5
	35	43.5			35.0	35.0	51.2

Description:

- Y₁: The center distance between slider surface to base.
- Y₂: The center distance between slider to cylinder body.
- Y₃: The center distance between slider surface to slider.

MSR(L)2

FMR(L)

MQX

MTX

MDQ2

MDQA

MDX

MDXL

MBX

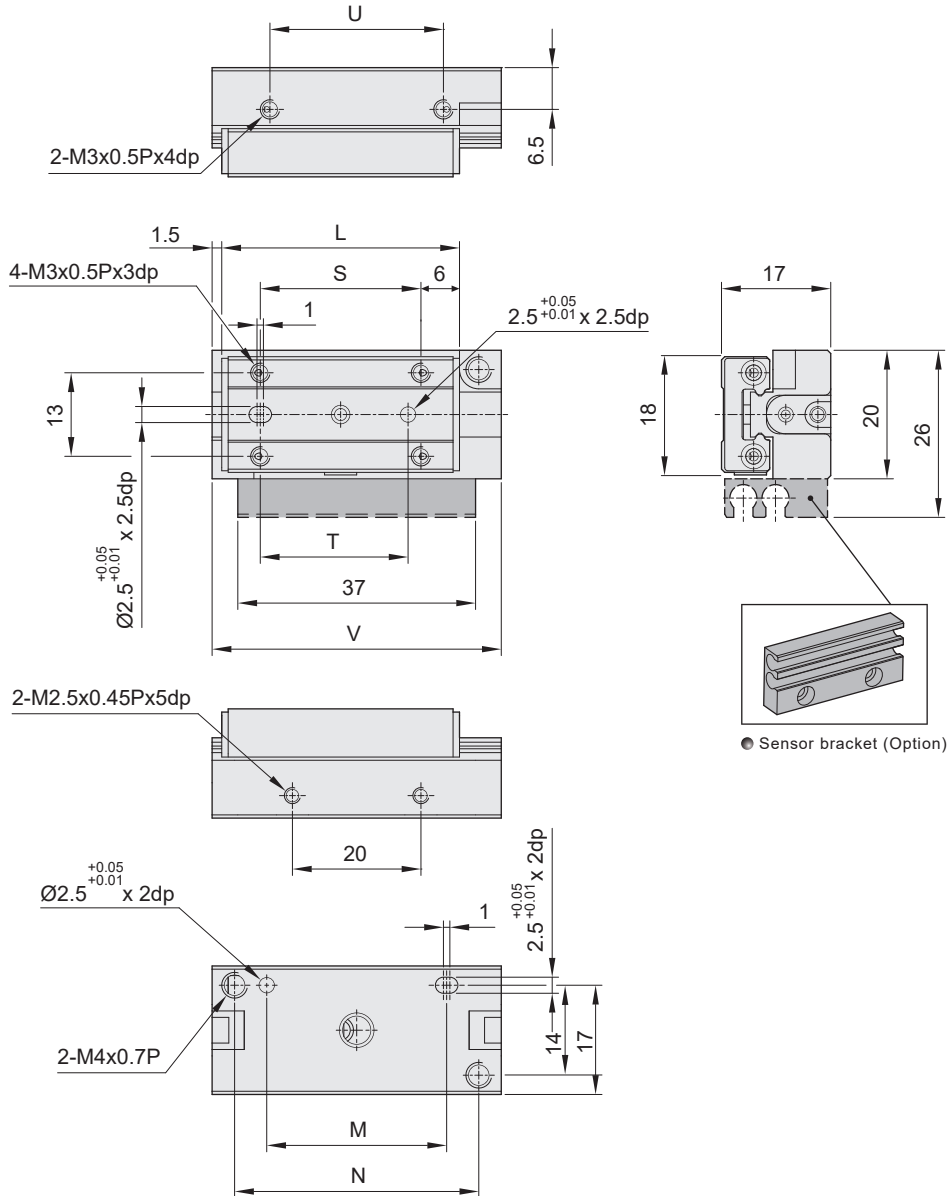
MGX

MBX series Air Slide Table

Dimensions (Without adjustment bolt)

CHELIC

● MBX 06 x ST



Unit: mm

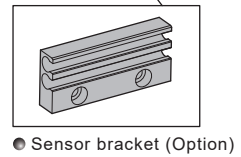
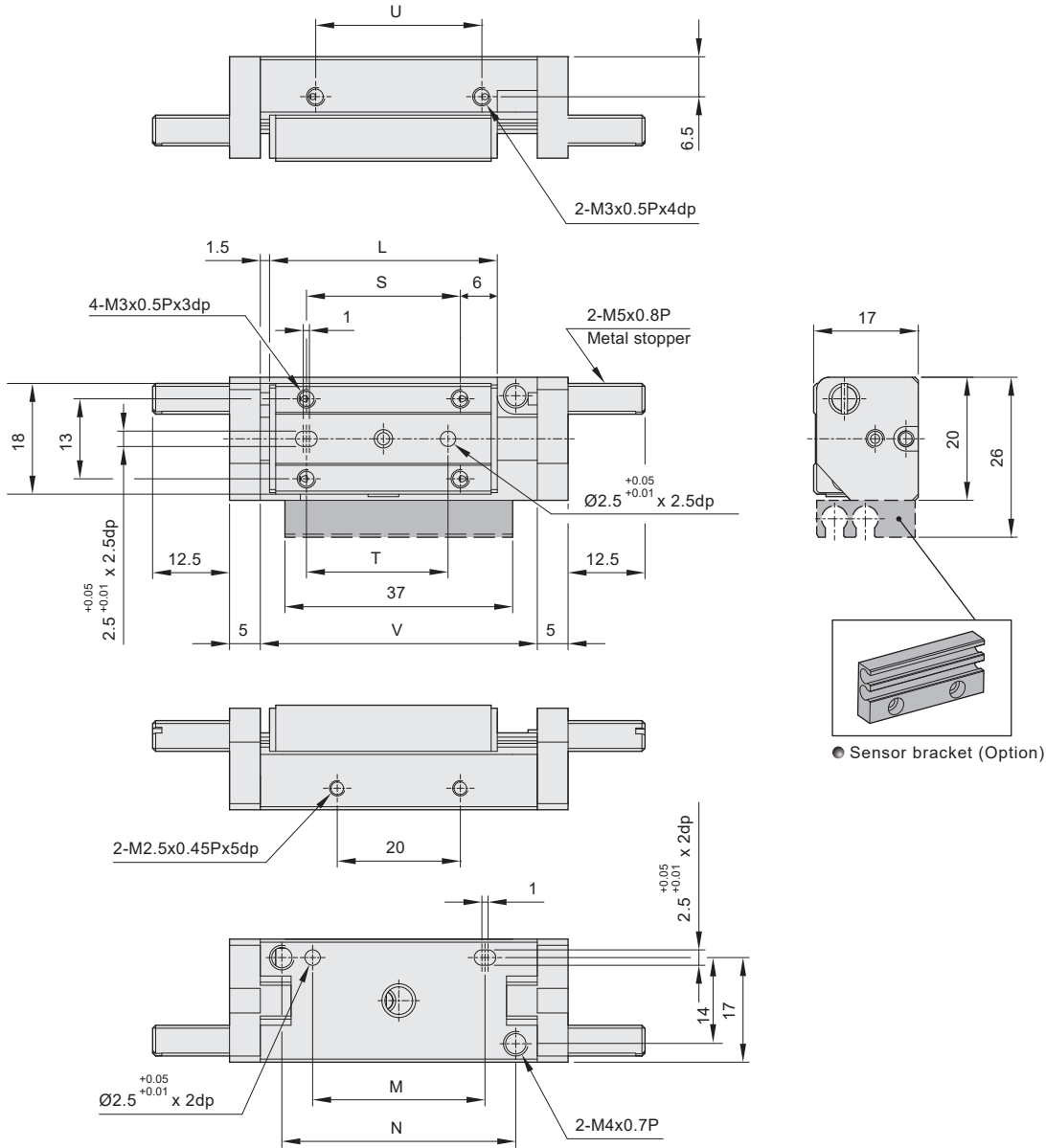
Model	U	L	S	T	V	M	N
MBX 06x05	27	37	25	23	45	28	38
MBX 06x10	42	47	35	30	60	37	53

MBX series Air Slide Table

Dimensions (With adjustment bolt)

CHELIC

● MBX 06 x ST - B



MSR(L)2

FMR(L)

MQX

MTX

MDQ2

MDQA

MDX

MDXL

MBX

MGX

Unit: mm

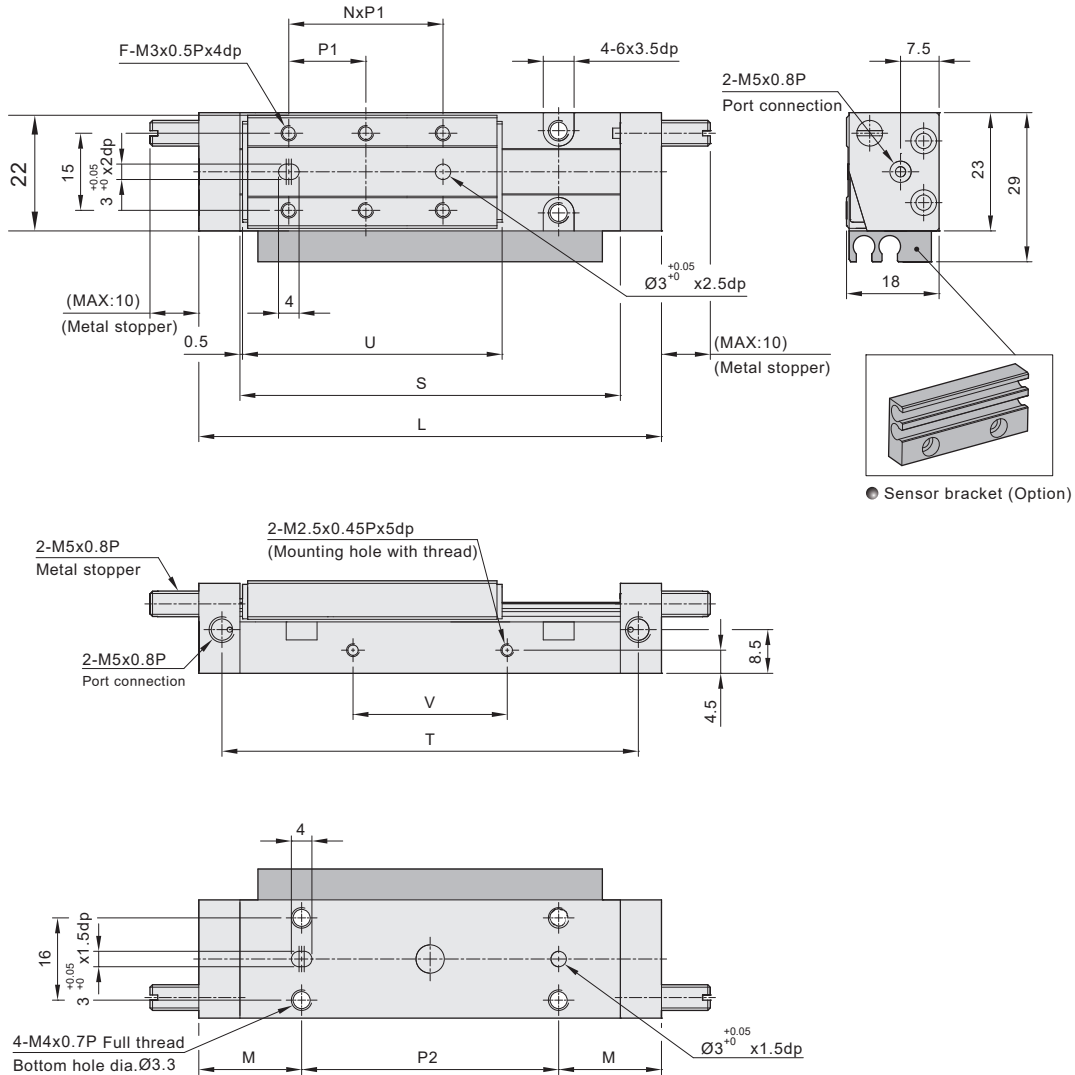
Model	U	L	S	T	V	M	N
MBX 06x05	27	37	25	23	45	28	38
MBX 06x10	42	47	35	30	60	37	53

MBX series Air Slide Table

Dimensions

CHELIC

● MBX 08 x ST



Unit: mm

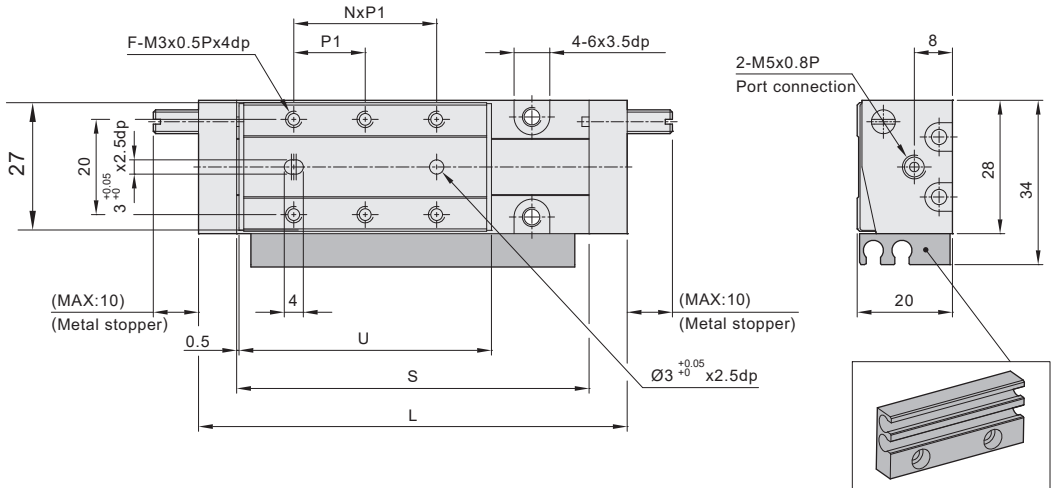
Model	U	L	S	T	V	M	P1	P2	N	F
MBX 08x10	33	60	44	51	20	14	15	32	1	4
MBX 08x20	53	90	74	81	30	20	15	50	2	6

MBX series Air Slide Table

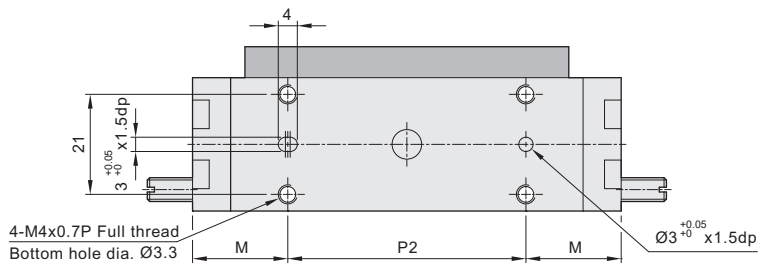
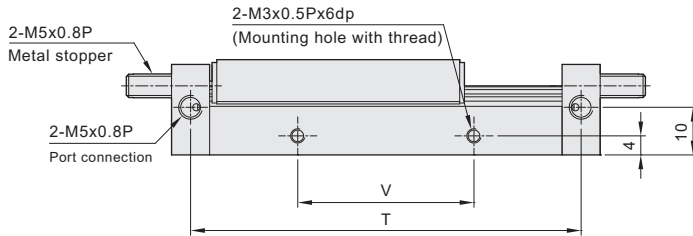
Dimensions

CHELIC

● MBX 10 x ST



● Sensor bracket (Option)



Unit: mm

Model	U	L	S	T	V	M	P1	P2	N	F
MBX 10x10	33	60	44	52	22	14	15	32	1	4
MBX 10x20	53	90	74	82	37	20	15	50	2	6

MSR(L)2

FMR(L)

MQX

MTX

MDQ2

MDQA

MDX

MDXL

MBX

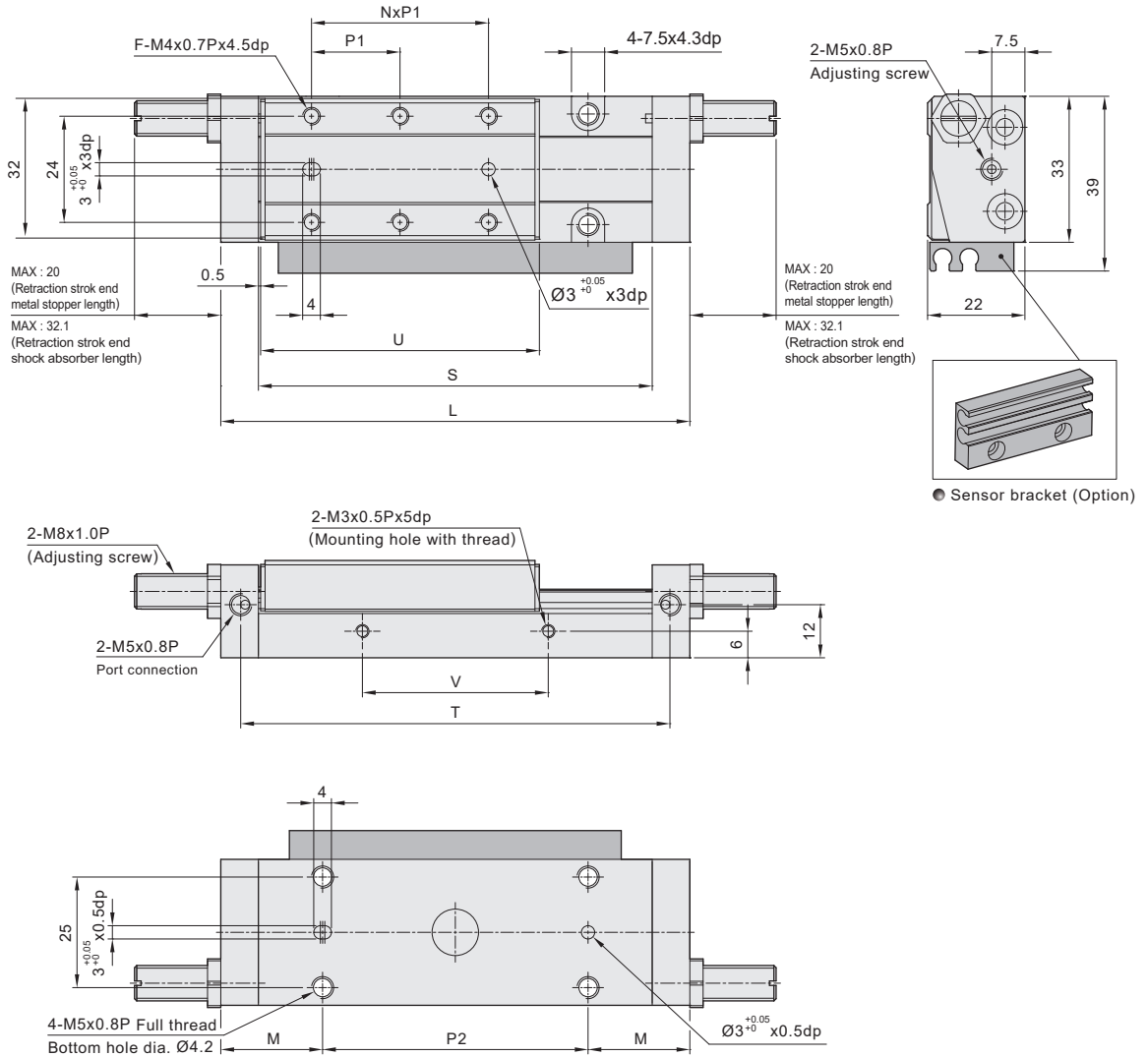
MGX

MBX series Air Slide Table

Dimensions

CHELIC

MBX 12 x ST



Unit: mm

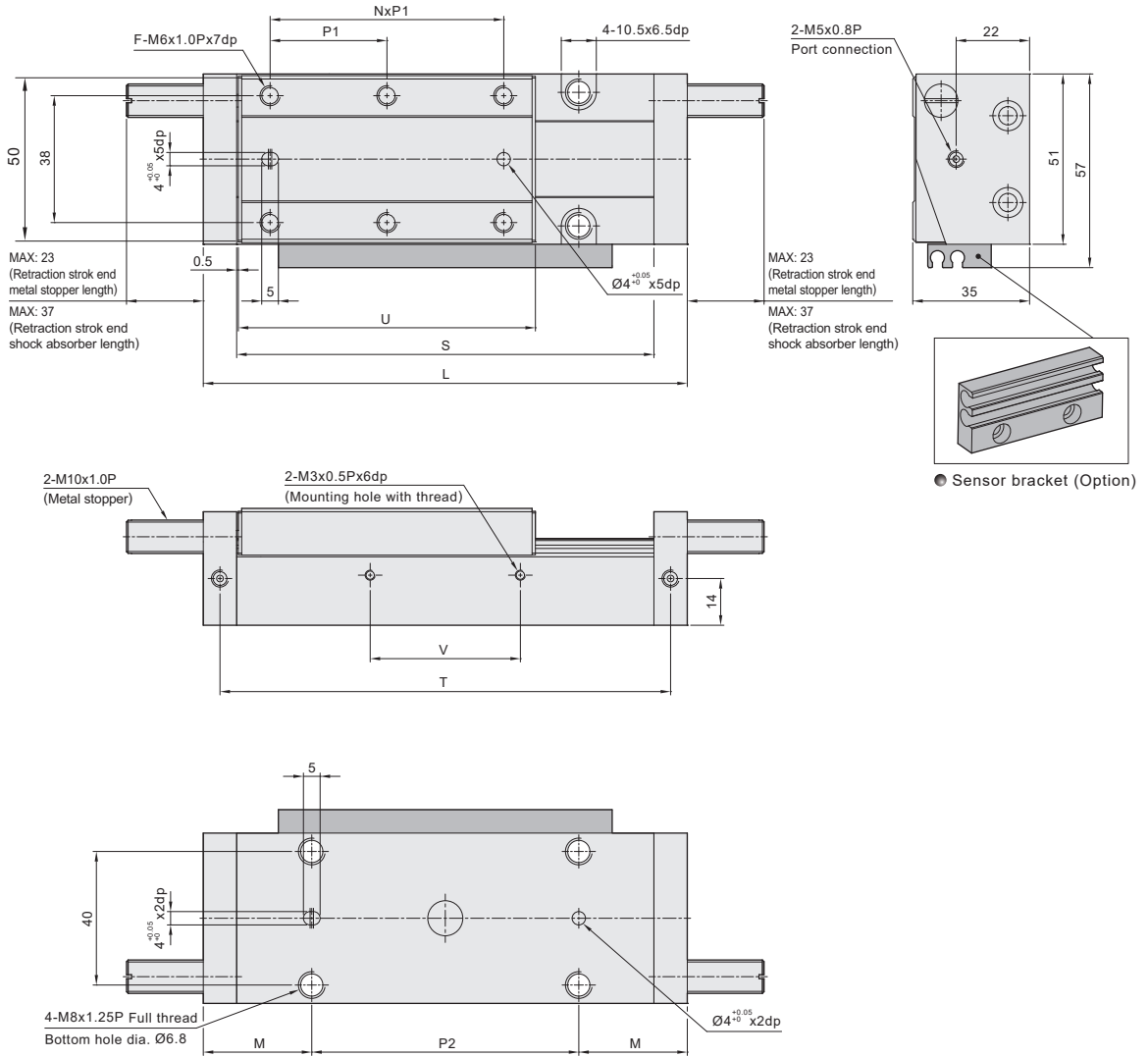
Model	U	L	S	T	V	M	P1	P2	N	F
MBX 12x15	43	76	59	67	22	18	20	40	1	4
MBX 12x25	63	106	89	97	42	23	20	60	2	6

MBX series Air Slide Table

Dimensions

CHELIC

MBX 20 x ST



Unit: mm

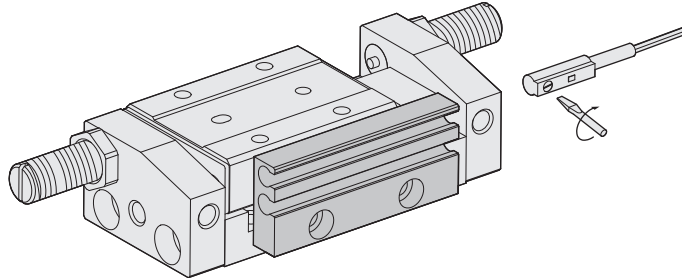
Model	U	L	S	T	V	M	P1	P2	N	F
MBX 20x25	79	125	105	115	45	22.5	50	80	1	4
MBX 20x35	89	145	125	135	45	32.5	35	80	2	6

MBX series Air Slide Table

Sensor switch operating range and the setting

CHELIC

Sensor switch mounting type



Sensing range

Sensor switch is fixed on the cylinder body. The magnetic piston head will activate the Sensor switch when it enters the operating range. It has 0.5mm differential.

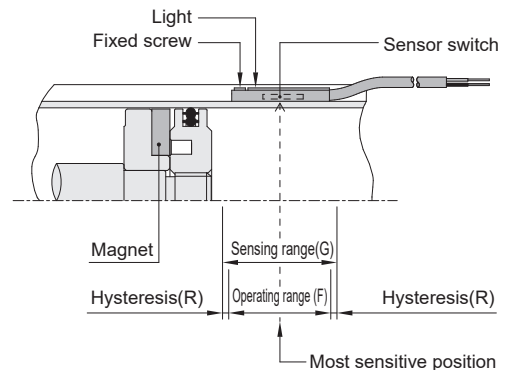
Operating range

When piston head moves the switch setting and adjustment will be based on the responding range generated by the magnetic field and the switch. (Please refer to the below table)

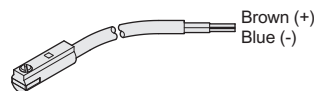
Unit: mm

Model	CS-8G	
Bore size	Operating range (F)	Hysteresis(R)
06	2.5	1
08	2.5	1
10	4.0	1
12	4.5	1
16	5.3	1.2
20	5.3	1.2

Sensor switch setting and operating range



Sensor switch introduction



CS-8G

Voltage: DC 5~30V

MSR(L)2

FMR(L)

MQX

MTX

MDQ2

MDQA

MDX

MDXL

MBX

MGX