

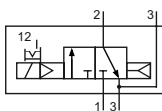
Technical details

Connection	G1/4, Namur
Nominal size	6 mm
Temperature range	-30°C ... +80°C
Medium	Filtered, oil-free and dried compressed air according to ISO 8573-1:2010, Class 7:2:4, instrument air, free of aggressive additives. Differing the pressure dew point must be at least 10°C below lowest occurring ambient temperature.
Materials	Body: Al (anodized), seals: FKM , inner parts: Al, stainless steel and brass
Protection	IP 65 according to EN 60529

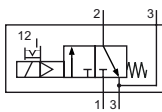


Electrically operated spool valve. The manual override is detent and is operated by screw driver. The location pin, screws and seals are included.

3/2-way-valves

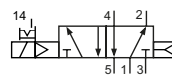


ICKN-55-310-HN-xxx
3/2-way, single solenoid, air spring return, NC

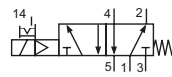


ICKN-55-311-HN-xxx
3/2-way, single solenoid, mechanical spring return, NC

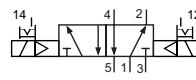
5/2- and 5/3-way-valves



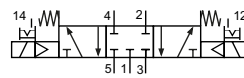
ICKN-55-510-HN-xxx
5/2-way, single solenoid, air spring return



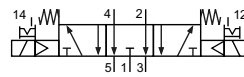
ICKN-55-511-HN-xxx
5/2-way, single solenoid, mechanical spring return



ICKN-55-520-HN-xxx
5/2-way, double solenoid



ICKN-55-530-HN-xxx
5/3-way, center position closed



ICKN-55-533-HN-xxx
5/3-way, center position exhausted

Please complete: xxx = electrical option

Electrical options

Nominal Ivoltage	Power consumption	Specifics	Plug connection*1	-xxx
24 V DC	4.2 W		Form B industrial norm	-F42

*1 Plug socket not included, suitable plug sockets see page 6-03.

Series ICKN-55

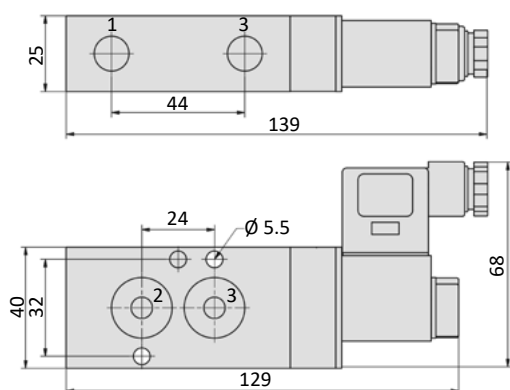
NAMUR

Technical data

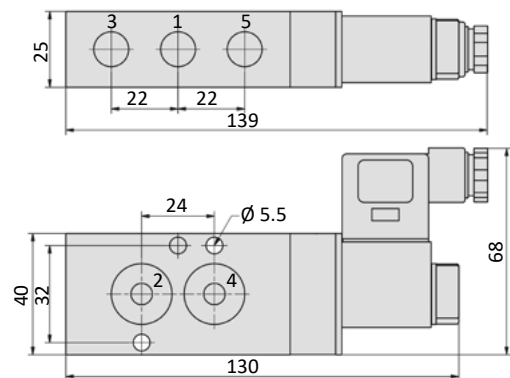
Model-no.:	ICKN-55-310	ICKN-55-311	ICKN-55-510	ICKN-55-511	ICKN-55-520	ICKN-55-530	ICKN-55-533
Operating pressure (bar)	3 ... 8	3 ... 8	3 ... 8	3 ... 8	2 ... 8	3 ... 8	3 ... 8
Pilot pressure (bar)	3 ... 8	3 ... 8	3 ... 8	3 ... 8	2 ... 8	3 ... 8	3 ... 8
Flow rate (NI/min)	780	780	900	800	900	680	680
Response time (ms) at 6 bar	on: 16 off: 18	on: 13 off: 16	on: 16 off: 17	on: 16 off: 18	on: 14 off: 14	on: 14 off: 16	on: 14 off: 16
Weight (kg)	0.320	0.320	0.320	0.320	0.440	0.440	0.440

Dimensions

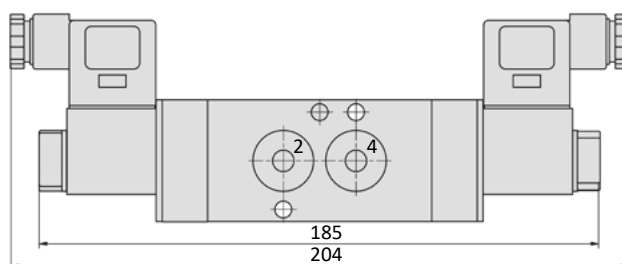
ICKN-55-31x-HN



ICKN-55-51x-HN



ICKN-55-520-HN, ICKN-55-53x-HN



1 = pressure inlet
2,4 = outlets
3,5 = exhausts

Plug socket (not included in scope of delivery) can be repositioned by 180°.
Solenoid coil can be repositioned.

Accessories



Plug sockets: page 6-14

Form B industrial norm

Overall width	22 mm
Contact distance	11 mm
Contacts	2P + E
Protection	IP 65 according to EN 60529 requires a flat gasket
For use with series	ICK-09, ICK-10, KMX-09, KMX-10, ICKN-55, KNX-55

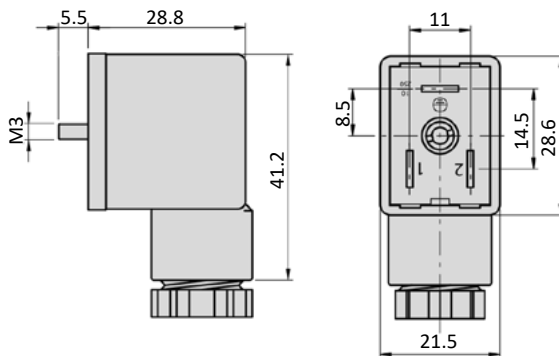


Model-no.:	28-ST-01	28-ST-04-112	28-ST-04-127	28-ST-06-112	28-ST-06-127	28-ST-06-K3-112*	28-ST-06-K3-127*
Voltage (AC/DC)	0 - 250 V	10 - 50 V	70 - 250 V	24 V	230 V	24 V	230 V
Status indicator	no	yes	yes	yes	yes	yes	yes
Protective circuit	no	no	no	yes (varistor)	yes (varistor)	yes (varistor)	yes (varistor)
Connecting cable	without	without	without	without	without	3 m	3 m
Wire cross section	max. 1.5 mm ²	max. 1.5 mm ²	max. 1.5 mm ²	max. 1.5 mm ²	max. 1.5 mm ²	3 x 0.75 mm ²	3 x 0.75 mm ²
Ø Connecting cable	6 - 8 mm	6 - 8 mm	6 - 8 mm	6 - 8 mm	6 - 8 mm		

* These plug sockets are fitted with integrated flat gaskets.

Dimensions

Form B industrial norm



Solenoid coils

Form B industrial norm

Overall width	22 mm
Contact distance	11 mm
Contacts	2P + E
Protection	IP 65 according to EN 60529 with connected plug socket
Duty cycle	100 %
Temperature range*	-50°C ... +80°C
Voltage tolerance	± 10 %
For use with series	ICK-09, ICK-10, KMX-09, KMX-10, ICKN-55, KNX-55



* The max. applicable operating temperature, depends on the temperature specification of the used valve.

Model-no.:	23-SP-011-1-712
Voltage	24 V DC
Power consumption DC	4.2 W
Power consumption AC	-
Specifics	enhanced humidity resistance

Dimensions

Form B industrial norm

