

# Power clamp cylinder

## JSK Series



### Specification

Model	JSK50	JSK63
Output torque (0.5MPa)	160N.m	380N.m
Acting type	Double acting	
Fluid	Air(to be filtered by 40μm filter element)	
Operating pressure	0.3~0.8MPa(43~116psi)	
Proof pressure	1.2MPa(175psi)	
Temperature	-20~70 °C	
Opening angle	5°~135°	
Minimum opening and closure time	1 second clamping, 1 second opening	
Position sensing	Electrical Inductive approaching sensor	
Cushion type	Air buffer	
Weight [Note1]	3.7kg	5.0kg
Port size [Note2]	1/4"	

[Note1] This weight includes 15mm offset clamping arm;

[Note2] PT thread, G thread are available.

### Ordering code

JSK  50 AM1R K

① ② ③ ④ ⑤ ⑥ ⑦

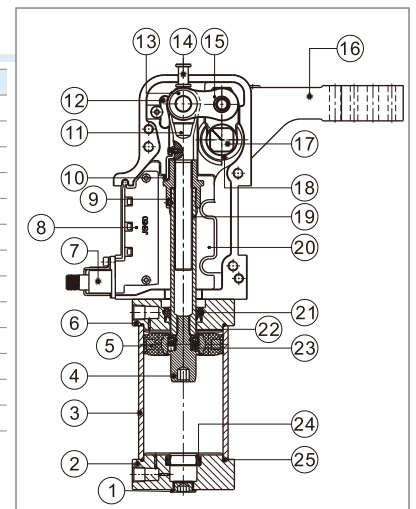
① Model	② Clamping arm position	③ Bore size	④ Clamping arm [Note1]	⑤ Sensor switch [Note2]	⑥ Thread type	⑦ Port
JSK: Power clamp cylinder	Blank: Horizontal 	50(oval) 63(oval)	Blank: No clamping arm	Blank: No sensor switch K: With electrical sensor switch(PNP) KN: With electrical sensor switch(NPN)	Blank: PT G: G	Blank  B 
			AM1: Offset 15mm 			
	AM3: Offset 45mm 		R C L 			
	AM2: Offset 15mm 		R C L 			
	V: Vertical 		AM4: Offset 45mm 			

[Note1] Please refer to the drawing for detailed dimensions of clamping arm. products come with opening angle of 90°.

[Note2] K/KN type sensor switch can be ordered separately and please refer to relative contents.

### Inner structure and material of major parts

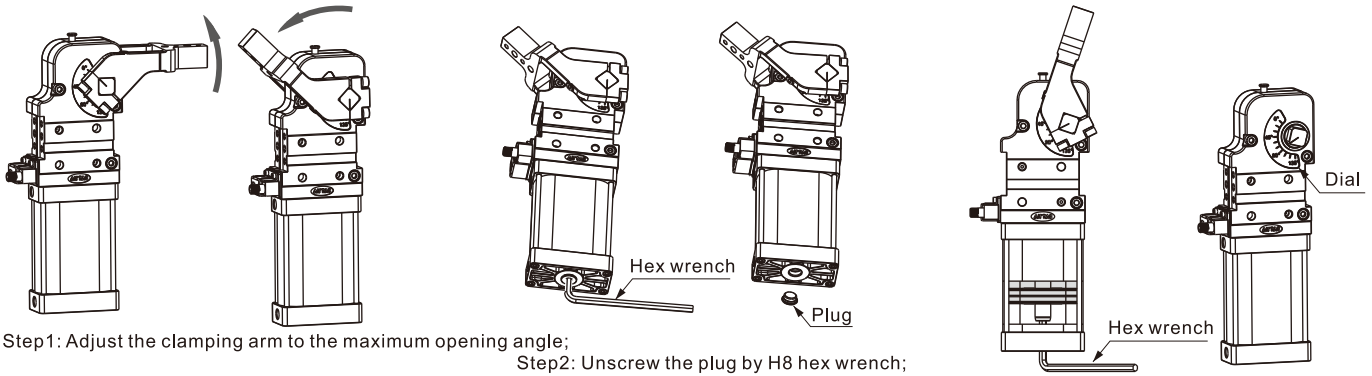
NO.	Item	Material	NO.	Item	Material
1	Plug	Carbon steel	14	Retaining pin	Carbon steel
2	Back cover	Aluminum alloy	15	Connecting rod	Alloy steel
3	Aluminum barrel	Aluminum alloy	16	Clamping arm	Carbon steel
4	Cushion body	Carbon steel	17	Pivot	Alloy steel
5	Piston	Aluminum alloy+NBR	18	Bushing	Alloy steel
6	Front cover	Aluminum alloy	19	Piston rod	Carbon steel
7	Sensor switch		20	End cap	Aluminum alloy
8	Sensor switch fix	Plastic	21	Spool O-ring	TPU
9	Joint	Alloy steel	22	Spring	Spring steel
10	Inductive block	Carbon steel	23	Steel ball	Stainless steel
11	I Knuckle	Alloy steel	24	Cushing O-ring	TPU
12	Strengthen steel plate	Alloy steel	25	O-ring	NBR
13	Bushing	Alloy steel			



# Power clamp cylinder

## JSK Series

### Instructions



Step1: Adjust the clamping arm to the maximum opening angle;  
 Step2: Unscrew the plug by H8 hex wrench;

#### Instructions

1. Cushioning body and piston are connected by thread and riveting.
2. Inductive block is fixed on the piston rod, which will move with piston rod while adjusting.
3. Sensor switch does not need further adjustment after finishing the angle adjustment.

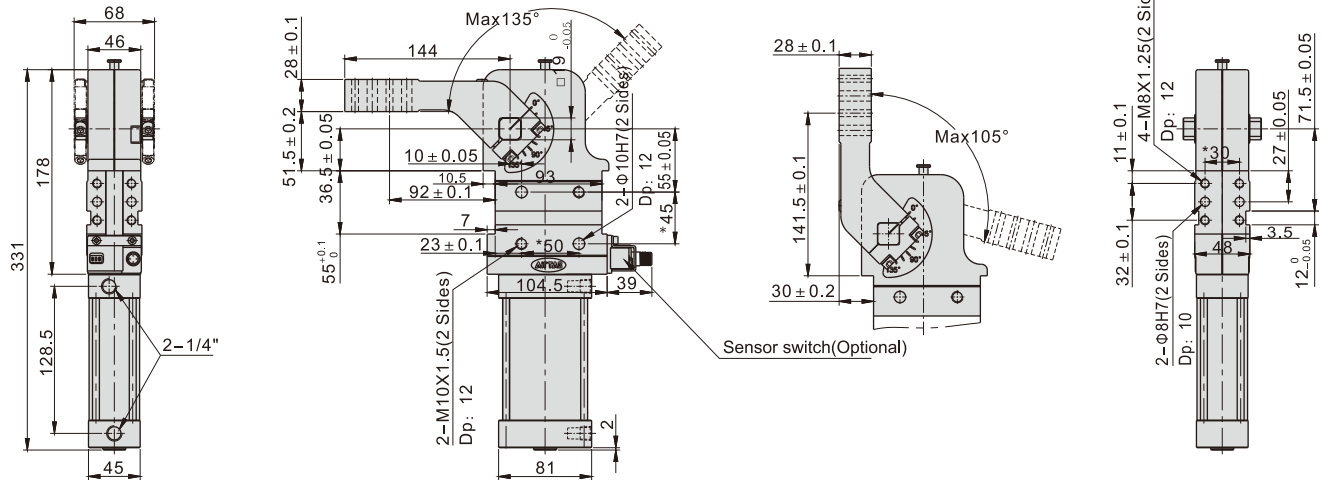
Step3: Adjust the clamping arm to the desired opening angle by H8 hex wrench.

### Dimensions

#### JSK50AM1(2)

##### Horizontal clamping position

##### Vertical clamping position

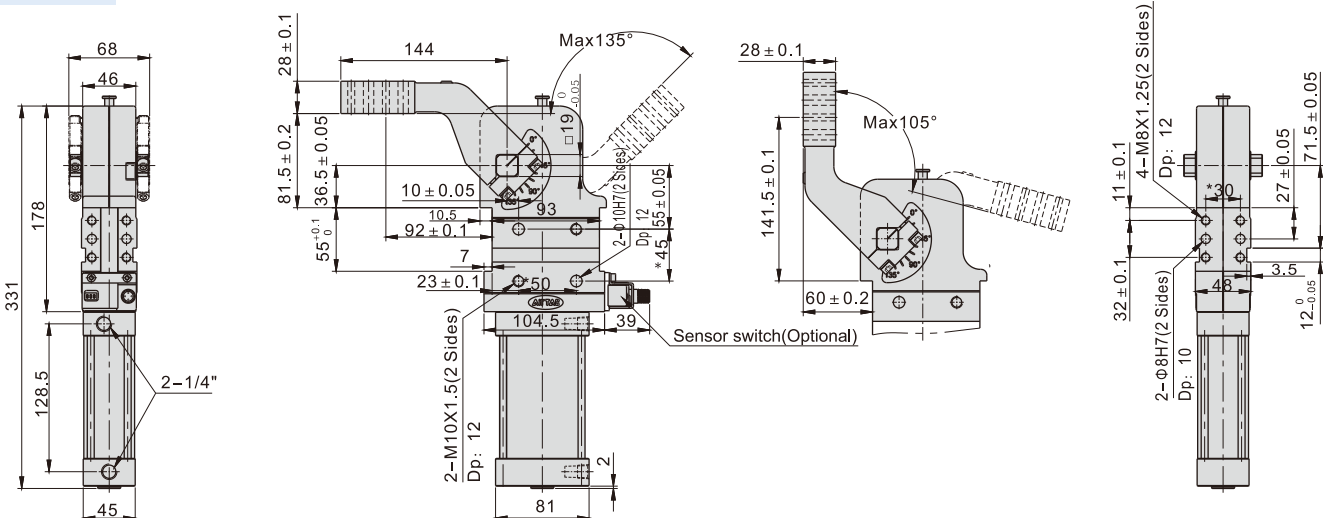


With \* dimension: Pin hole position tolerance:  $\pm 0.02$ . Thread hole position tolerance:  $\pm 0.1$ .

#### JSK50AM3(4)

##### Horizontal clamping position

##### Vertical clamping position

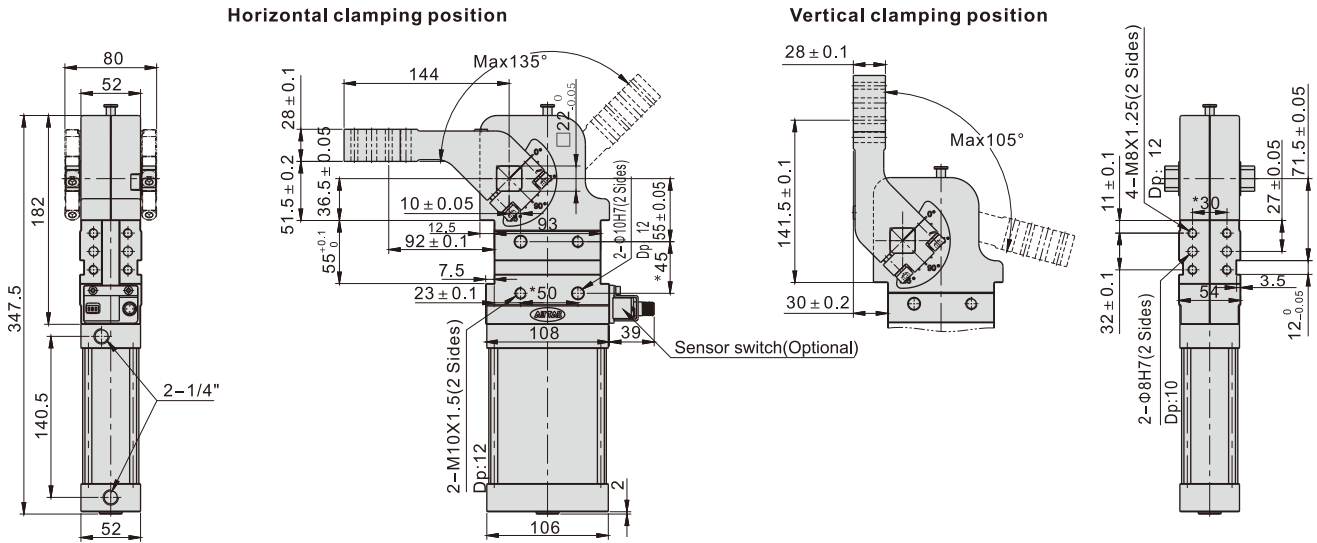


With \* dimension: Pin hole position tolerance:  $\pm 0.02$ . Thread hole position tolerance:  $\pm 0.1$ .

# Power clamp cylinder

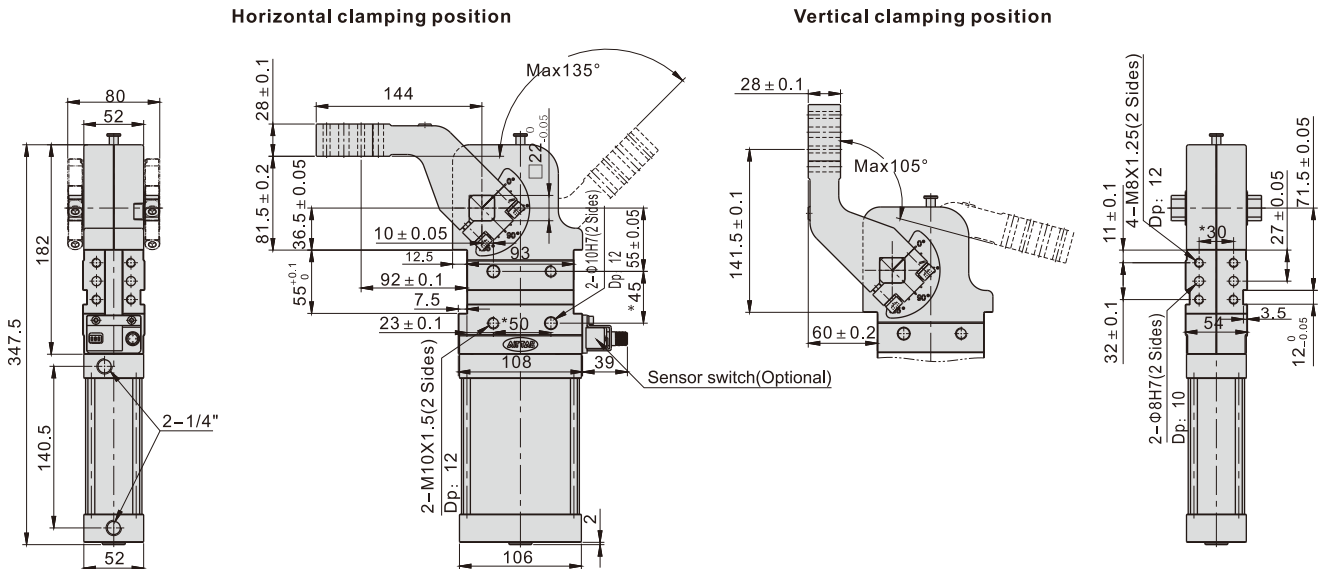
## JSK Series

### JSK63AM1(2)



With \* dimension: Pin hole position tolerance:  $\pm 0.02$ . Thread hole position tolerance:  $\pm 0.1$ .

### JSK63AM3(4)



With \* dimension: Pin hole position tolerance:  $\pm 0.02$ . Thread hole position tolerance:  $\pm 0.1$ .