

SCHMERSAL Tech Briefs:

Universal BDF200 Control Station



Overview

The BDF series control stations are designed to offer up to 4 operators for various machine or process controls conveniently located at the guard door in one compact, easy to install housing. The BDF series eliminates the need for larger custom control boxes to be designed and manufactured for guard door controls.

The Universal Kit model (-2875) has several positions, designated LT in the part number, which can be converted in the field to either a pushbutton, an illuminated push button, or an indicator light. This conversion is based on the wiring of the contacts and/or LED for each position, and the application of appropriate colored button caps provided. The accessories package includes 7 opaque button caps in various colors, 5 semi-transparent button caps in various colors, and 4 lens inserts.

Three types of base models are available:

- all four operator positions customizable;
- either a NH or NHK E-Stop button installed in position 1, with the remaining three operator positions customizable;
- either a NH or NHK E-Stop buttons installed in position 1, a SWS20 keyed selector switch installed in position 2, and the remaining two operator positions customizable.

These models are offered with 1 NO & 1 NC contacts (-11), 2 NO contacts (-20), or with 1 NO contact and LED indicator lamp (-10...-G24).

Operator Options



NH E-Stop Operator for position 1



NHK Collared E-Stop Operator for position 1



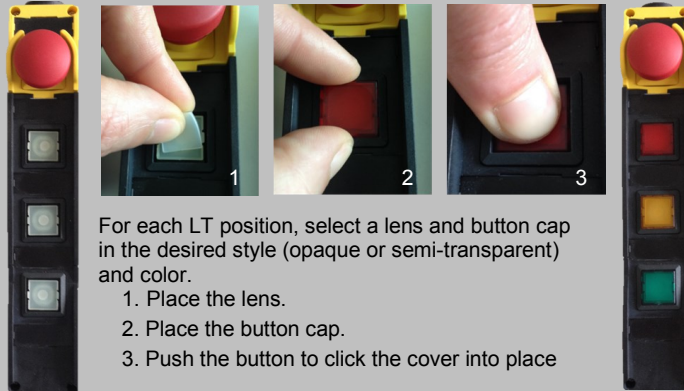
SWS20 Keyed Selector Switch with maintained actuation for position 2

Features



BDF200 fits standard housing extrusions and aesthetically matches our AZM200.

Field customization



For each LT position, select a lens and button cap in the desired style (opaque or semi-transparent) and color.

1. Place the lens.
2. Place the button cap.
3. Push the button to click the cover into place

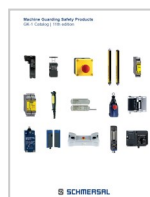
The LT positions can be converted into one of three options:

- For a pushbutton, use an opaque cap and connect only the contacts for that position.
- For a illuminated pushbutton, use a semi-transparent cap and connect the contacts and the LED.
- For a indicator light, use a semi-transparent cap and only connect the LED.

Applications

- Material handling systems
- Packaging machinery
- Chemical processing equipment
- Robot cells
- Folding or brake presses
- Filter presses
- Punching machines
- Printing machines
- Injection molding
- Palletizers
- Packaging equipment

Available Literature



GK-1 Products Catalog page 2-16

Ordering Details

Items in bold are regularly stocked

All customizable positions

BDF200-LT-11-LT-LT-LT-2875
BDF200-LT-20-LT-LT-LT-2875

With E-Stop

BDF200-NH-11-LT-LT-LT-2875
 BDF200-NHK-11-LT-LT-LT-2875
BDF200-NH-20-LT-LT-LT-2875
 BDF200-NHK-20-LT-LT-LT-2875
BDF200-NH-10-LT-LT-LT-G24-2875
 BDF200-NHK-10-LT-LT-LT-G24-2875

With E-Stop & Keyed selector switch

BDF200-NH-11-SWS20-LT-LT-2875
 BDF200-NHK-11-SWS20-LT-LT-2875
 BDF200-NH-20-SWS20-LT-LT-2875
 BDF200-NHK-20-SWS20-LT-LT-2875

Accessories

BDF-U200-PBC (spare pushbutton covers)

Includes:

- 7 opaque button covers
Yellow, Red, Green, Blue, White, Grey, and Black
- 5 Semi-transparent button covers
Yellow, Red, Green, Blue, and White
- 4 lens inserts

MP BDF 200 (Mounting plate for use with AZM200)

Part number breakdown

BDF200-①-②-③-LT-LT-④-2875

- ① Operator Position 1
 NH E-Stop button on yellow
 NHK Collared E-Stop on yellow
 LT Customizable button
- ② Contacts
 11 1 NO & 1 NC
 20 2 NO
 10 1 NO
- ③ Operator Position 2
 STS20 Keyed Selector Switch
 LT Customizable button
- ④ LED indicator lamp
 Blank without
 G24 for 10 contacts only

Contact

Schmersal USA

660 White Plains Road
 Suite 160
 Tarrytown, NY 10591
 Tel: 914-347-4775
 Fax: 914-347-1567
 E-mail: salesusa@schmersal.com

Schmersal Canada

15 Regan Road
 Unit #3
 Brampton, ON L7A 1E3
 Tel: 905-495-7540
 Fax: 905-495-7543
 E-Mail: salescanada@schmersal.com