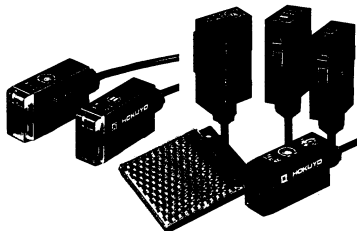


## PX1/PX2 SERIES

### FULL FUNCTIONS IN COMPACT CASE

- Both head-on type and side-on type are available.
- A long detection distance can be realized by the high-margin type.



### Specifications (Standard type/High-margin type)

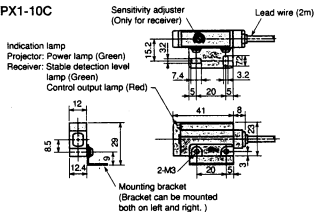
Type	Through-beam type				Reflector reflection type		Reflection type			
Appearance										
Model	PX1-C	PX1-10C	PX2-C	PX2-10C	PX1-H3C	PX2-H3C	PX1-H1C	PX1-50H1C	PX2-H1C	PX2-50H1C
Power source	12V~24VDC $\pm$ 10%, Ripple: 10% or less									
Power consumption	Projector: 30mA or less Receiver: 10mA or less (The projector for high-margin types is 12mA or less and the receiver is 10mA or less)				15mA or less		15mA or less (The same as high-margin type)			
Light source	Infrared light-emitting diode (Modulation light)									
Detection distance (Rated value)	3m	10m	3m	10m	0.1~1.5m (When reflection plate attached is used)		20cm*	50cm*	20cm*	50cm*
Detectable object	Opaque object: $\phi$ 8mm or more				Opaque object: $\phi$ 50mm or more (At just before reflection plate) Opaque object: $\phi$ 6mm or more (At just before photo electric switch)		Transparent object Semi-transparent object Opaque object			
Control output	NPN transistor (short-circuit protective circuit, rated current source and zener diode are provided) Allowable load voltage: Max. 30V, Allowable load current: Max. 100mA. Residue voltage: Max. 1.3V/100mA, 0.5V/10mA. Rated current output: Max. 1.5mA									
Ambient temperature and humidity	-25°C ~ +60°C when operated, -25°C ~ +70°C when stored. 35% ~ 85%RH (Not frozen)									
Protective structure	IP66 (IEC Standard)									

Note) The self-diagnosis type can be also available.

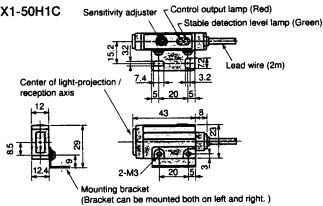
\*White paper 20×20 cm

### External dimensions

PX1-C/PX1-10C

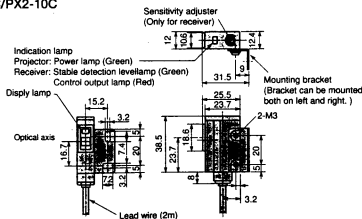


PX1-H1C/PX1-50H1C  
PX1-H3C



Note) Dimension in parentheses is for PX1-50H1C

PX2-C/PX2-10C



PX2-H1C/PX2-50H1C  
PX2-H3C

