



## ***Level or level and temperature sensor NT 63***

- Flange according to DIN 24557 / Part 2
- Continuous liquid level measurement
- Continuous liquid level and temperature measurement
- 4-20 mA outputs (2-10 V on request)
- Resolution 5 mm (liquid level)
- Multiple connector options
- Reliable dynamic float system
- Float and probe in stainless steel, optional
- Probe length up to 1420 mm, longer on request

## Technical data

## NT 63

### Basic unit

**K** = continuous level and temperature measurement  
**KN** = continuous level measurement

max. operating pressure 1 bar  
 operating temperature -20 °C to +80 °C  
 min. spec. density of fluid 0.80 kg/dm<sup>3</sup> with float SK 604  
 0.85 kg/dm<sup>3</sup> with float SK 221  
 lengths mm 280, 370, 500, 670, 820, 970, 1120,  
 1270, and 1420 mm  
 (other lengths on request)

weight **MS** **VA**  
 at L=280 mm approx. 200 g approx. 300 g  
 plus per 100 mm approx. 30 g approx. 50 g

### Material / Construction

float **MS** **VA**  
 hard PU (SK 604) 1.4571 (SK 221)  
 flange DIN 24557 part 2 PA PA  
 immersion tube brass 1.4571

### Level measurement

resolution 5 mm  
 supply voltage (U<sub>B</sub>) 10 - 30 V DC  
 ripple < 1 %  
 output signal 4-20 mA  
 load Ω max. (U<sub>B</sub> - 7.5 V) / 0,02 A

### Temperature measurement

#### for Type 63 K

sensor Pt 100 class B DIN EN 60 751  
 tolerance ± 0,8 °C  
 supply voltage (U<sub>B</sub>) 10 - 30 V DC  
 ripple < 1 %  
 output signal 4-20 mA (≈ 0-100 °C\*)  
 load Ω max. (U<sub>B</sub> - 7,5 V) / 0,02 A  
 \* on request other ranges

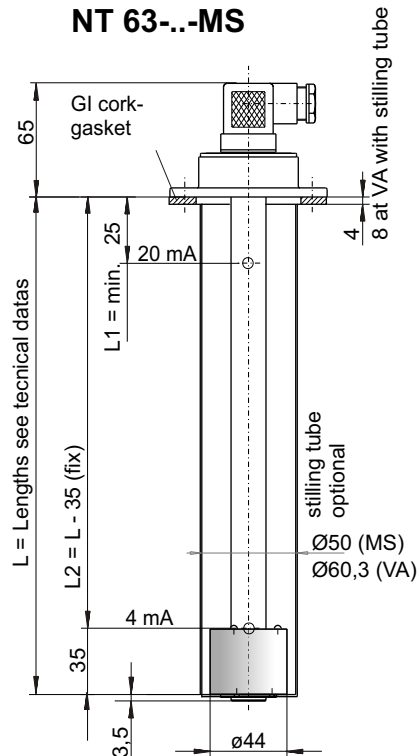
### included in delivery

mounting bolts (6 pieces) and GI cork-gasket

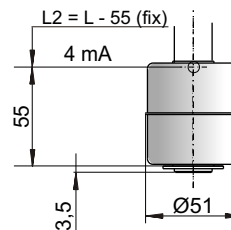
### Options

stilling tube **SSR** Material like immersion tube

## NT 63--MS

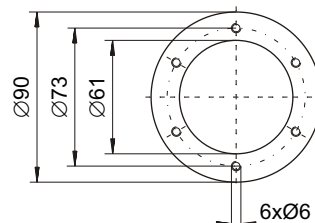


## NT 63-- VA



### Flange picture

according to DIN 24557 / Part 2



Connector	M3 (DIN EN 175301-803) 3 pol. + PE IP 65 PG 11	M12 (Sockel) 4 pol. IP67**
protection class cable connection		**with casted connector head
Standard pin assignment		
<b>K</b> continuous level and temperature		
<b>KN</b> continuous level		

## Product code for NT 63

NT 63-  -  -  -  -

### Series

Nivotemp **NT 63**

**K** = Level and temperature measurement

**KN** = only level measurement

### Design

**MS** brass

**VA** float and immersion tube VA

### Connector

**M3**

**M12**

### Length (max. 1420 mm)

280

370

500

670

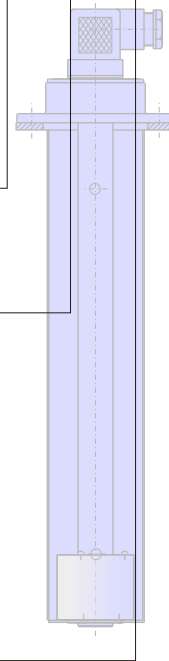
820

970

1120

1270

1420



### Option

**SSR** = stilling tube

### Accessories:

#### Part No.

#### Description

91 44 05 0010 Connecting cable M12x1, 4-pol., 1,5 m, elbow connector (female) and straight connector (male)

91 44 05 0046 Connecting cable M12x1, 4-pol., 3,0 m, elbow connector (female) and straight connector (male)

91 44 05 0047 Connecting cable M12x1, 4-pol., 5,0 m, elbow connector (female) and wire

Optionally a programmable display and control unit is available which shows and monitors the measurement,

### Example for order

You need: Level and temperature measurement with a resolution of 5mm, construction brass, with M12 connector and length L=670 mm