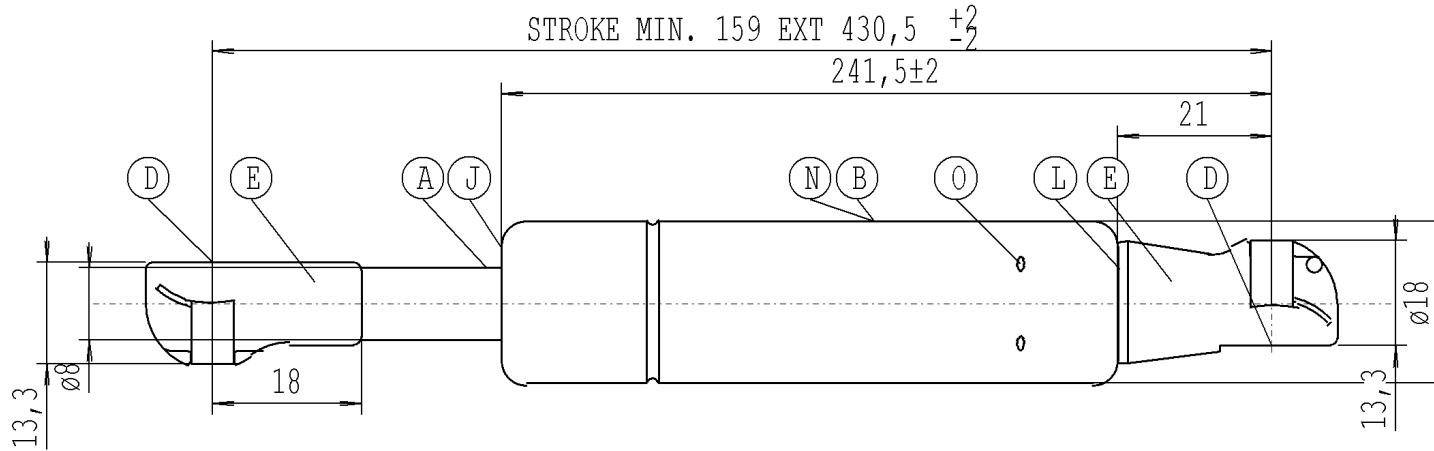


We reserve all rights to this drawing, to any patents or patent registrations related hereto, and to the duplication, retransmission by third parties and misc. use. Any use of this drawing is not permitted without the written consent of STABILUS.

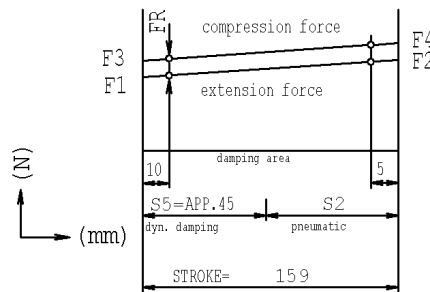
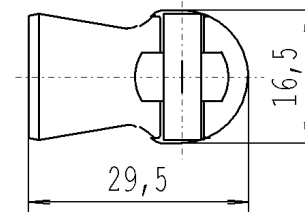
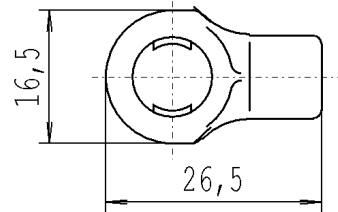
Intended for internal use and customer



### STABILUS LIFT-O-MAT

NICHT OEFFNEN HOHER DRUCK  
DO NOT OPEN HIGH PRESSURE  
STABILUS STANDARD

- the Gas Spring must not be mechanically modified or damaged.
- The warning label must not be removed or obscured.
- Dynamic damping choke cross section continuous becoming less in direction of extension.
- Line up connections permissible deviation  $\pm 5$  DEG
- compression and extension forces measured acc. to STAB-Spec. 10009033
- Extension speed measured according to STAB-Spec. 10006487
- Spring test with piston rod downwards
- Protect piston rod from dirt, paint and damage
- Disposal acc. to STAB-Spec.10009375
- Drawing not true-to-scale
- Installation: Preferably with piston rod down
- Observe installation instructions according to STAB-Spec. 10005593
- Disassemble ball-stud to STAB-Spec.10006399
- Ball socket to suit ball stud DIN 71803  $\phi 10$
- Permissible operating temperature range  $-30^{\circ}\text{C}$  to  $+80^{\circ}\text{C}$
- Component testing gas spring acc. STAB-Spec. 10010035



- A Nislid black
- B print white
- D greased
- E releasing torque: min. 2,5Nm
- J border flange oiled
- L at welding area oiled
- N black painted
- O dinks permissible

**Unregistered Copy**  
 Print-out is not subject to the modification service

## STABILUS

Modifications in favour of technical process reserved

Forces (statically measured)

F1 (N)	F4 max (N)	FR max (N)
extension force 470 $\pm 20$	compression force 690	friction 45

DIMENSIONS WITH-  
OUT TOLERANCE

$\pm 0,1$

### LIFT-O-MAT DD

03 01 0816 10 169

DRAWING CHECKED

DATE 23.05.2003 NAME G.Stein

Document No. 10023259

# 016570

E