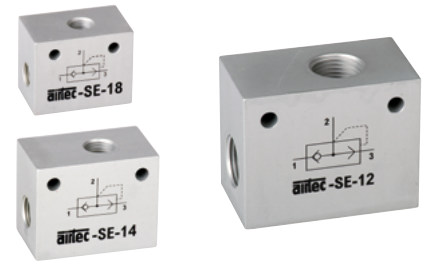
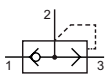


**Technical details**

<b>Temperature range</b>	-10°C ... +70°C
<b>Medium</b>	Filtered, oil-free and dried compressed air according to ISO 8573-1:2010, Class 7:2:4, instrument air, free of aggressive additives. Alternatively the pressure dew point must be at least 10°C below lowest occurring ambient temperature.
<b>Materials</b>	Body: Al (anodized), seals: NBR
	Valves in accordance with 2014/34/EU (ATEX) available. (Chapter 13)

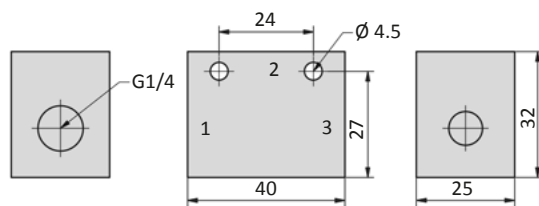
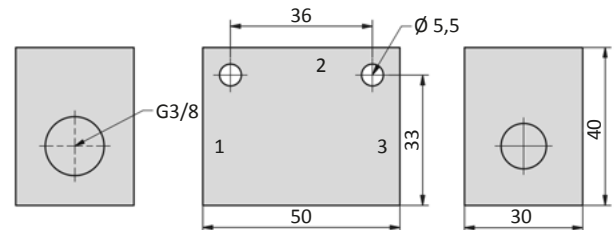
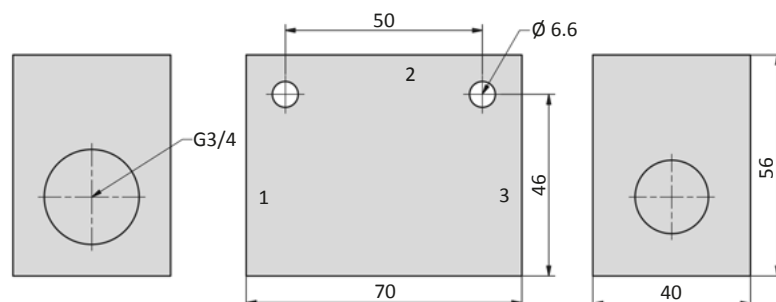


A quick exhaust valve is used to increase the speed of a pneumatic cylinder. The flow from the control valve to the cylinder ports is unrestricted. If valve port 1 is de-pressurized, air is exhausted from 2 to 3.

**SE-valves**

 SE-xx  
quick exhaust valve

**Technical data**

Model-no.:	SE-18	SE-14	SE-12
<b>Connection</b>	G1/8	G1/4	G1/2
<b>Nominal size 1-2 (mm)</b>	5	7	12
<b>Nominal size 2-3 (mm)</b>	8	10	16
<b>Flow rate 1-2 (NI/min)</b>	600	1200	2800
<b>Flow rate 2-3 (NI/min)</b>	1200	2400	5600
<b>Operating pressure (bar)</b>	0.5 ... 10	0.5 ... 10	0.5 ... 10
<b>Weight (kg)</b>	0.070	0.125	0.310

**Dimensions**
**SE-18**

**SE-14**

**SE-12**


- 1 = inlet from valve
- 2 = outlet to cylinder
- 3 = exhausts